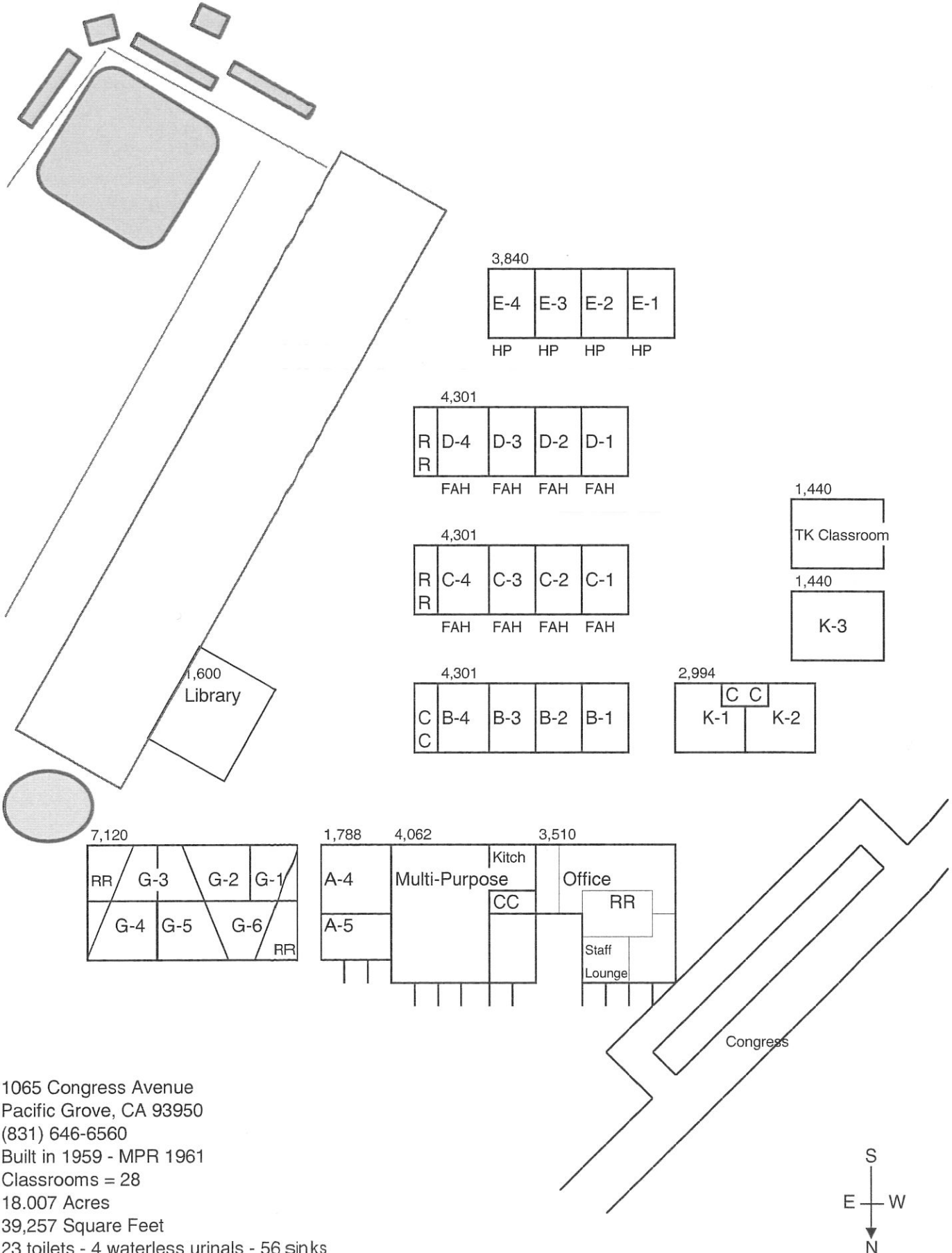
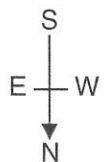


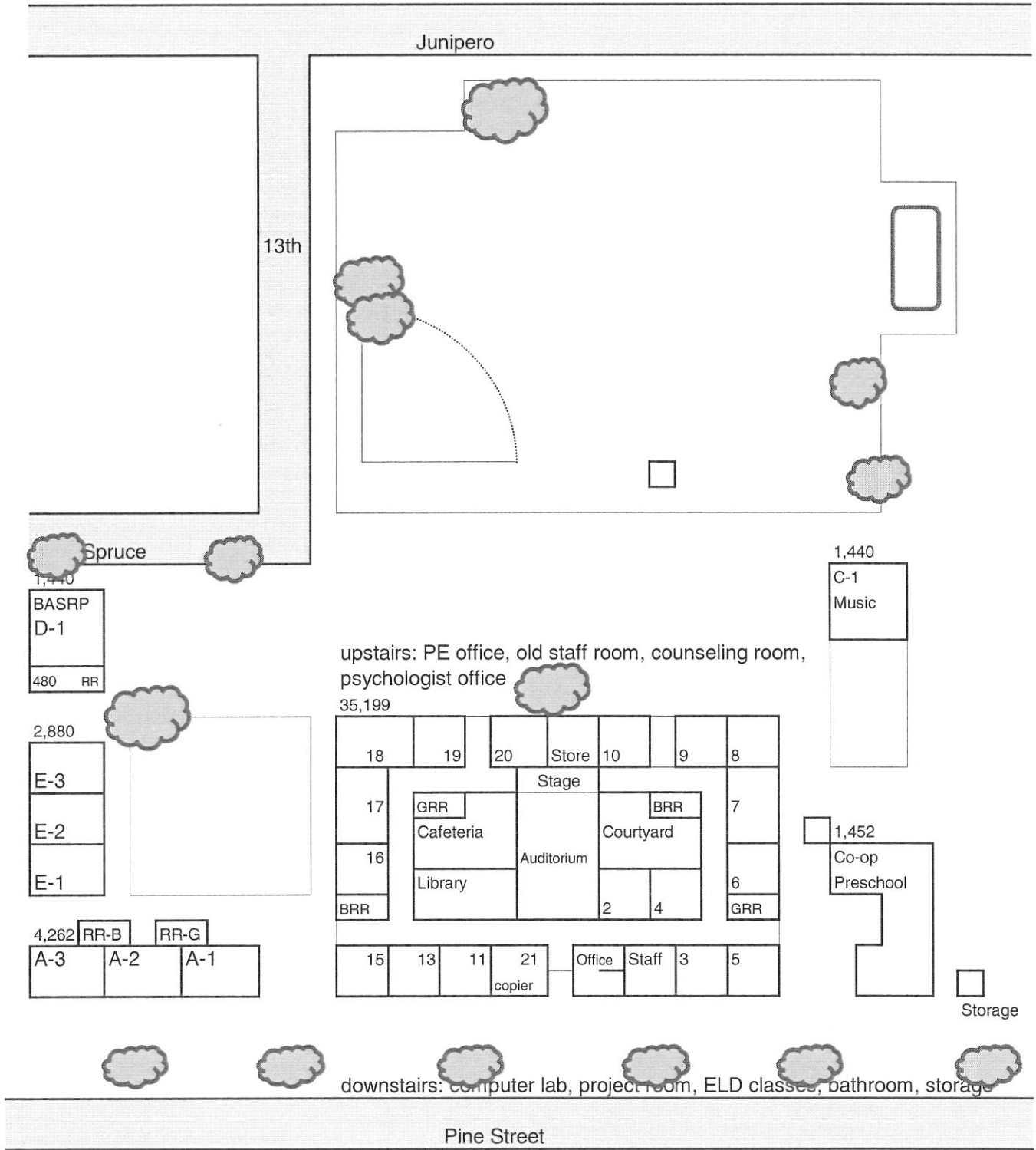
# Forest Grove Elementary School



1065 Congress Avenue  
 Pacific Grove, CA 93950  
 (831) 646-6560  
 Built in 1959 - MPR 1961  
 Classrooms = 28  
 18.007 Acres  
 39,257 Square Feet  
 23 toilets - 4 waterless urinals - 56 sinks  
 7 Heat Pumps - 27 Forced Air Heaters  
 Budget14-15 Maps 3/12/2015 2:01 PM



# Robert Down Elementary School



485 Pine Avenue  
Pacific Grove, CA 93950

(831) 646-6540

Built in 1921-1929

Classrooms = 24

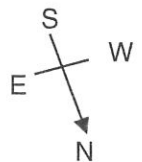
7.938 Acres

47,153 Square Feet

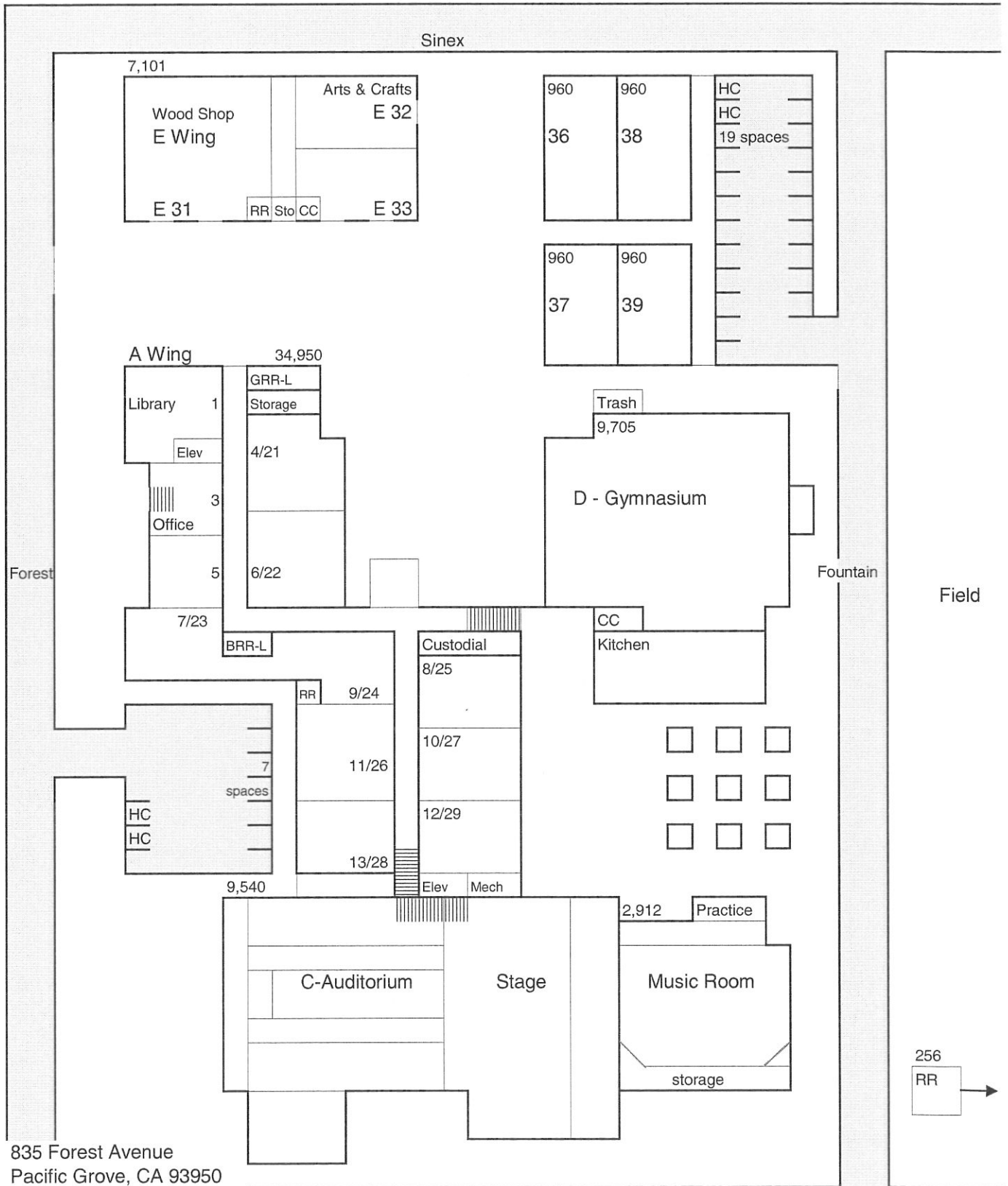
35 toilets - 11 waterless urinals - 67 sinks

5 Heat Pumps - 33 Forced Air Heaters - 2 Air Handlers 87

Budget14-15 Maps 3/12/2015 2:01 PM



# Pacific Grove Middle School



835 Forest Avenue  
 Pacific Grove, CA 93950  
 (831) 646-6568

Built in 1911 and 1948

Classrooms = 27

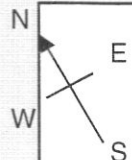
13.737 Acres

65,136+ Square Feet

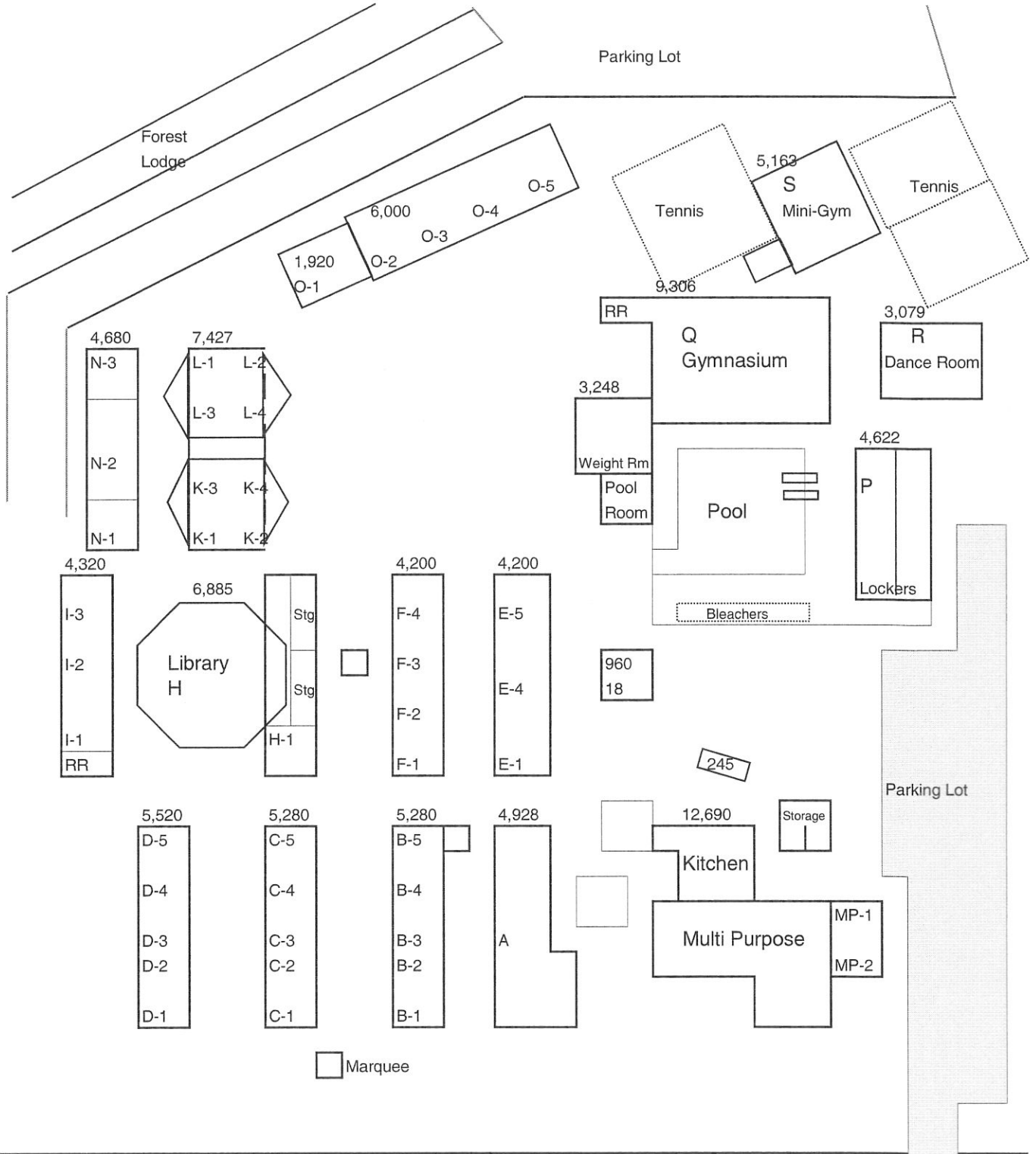
33 toilets - 12 waterless urinals - 86 sinks

5 Heat Pumps - 19 Forced Air Heaters - 2 Air Handlers 88

Budget14-15 Maps 3/12/2015 2:01 PM



# Pacific Grove High School



615 Sunset Drive  
 Pacific Grove, CA 93950

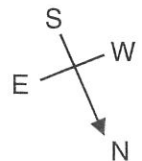
(831) 646-6590  
 Built in 1955-1959, 2011

Classrooms = 43  
 31.474 Acres  
 95,338 Square Feet

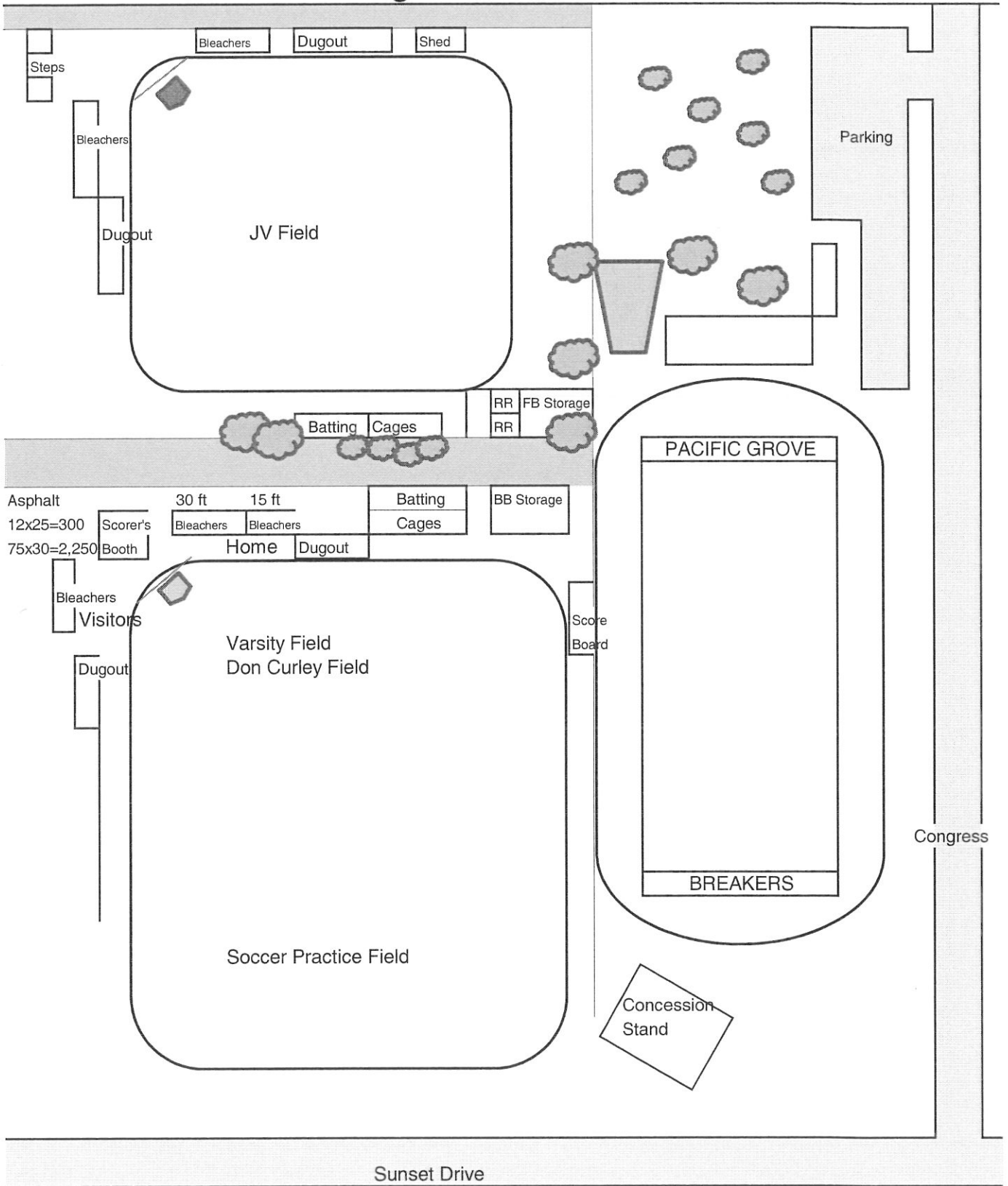
57 toilets - 30 waterless urinals - 12 showers - 179 sinks

3 Pumps-38 FA Heaters-8 Air Handlers-16 Radiators 89

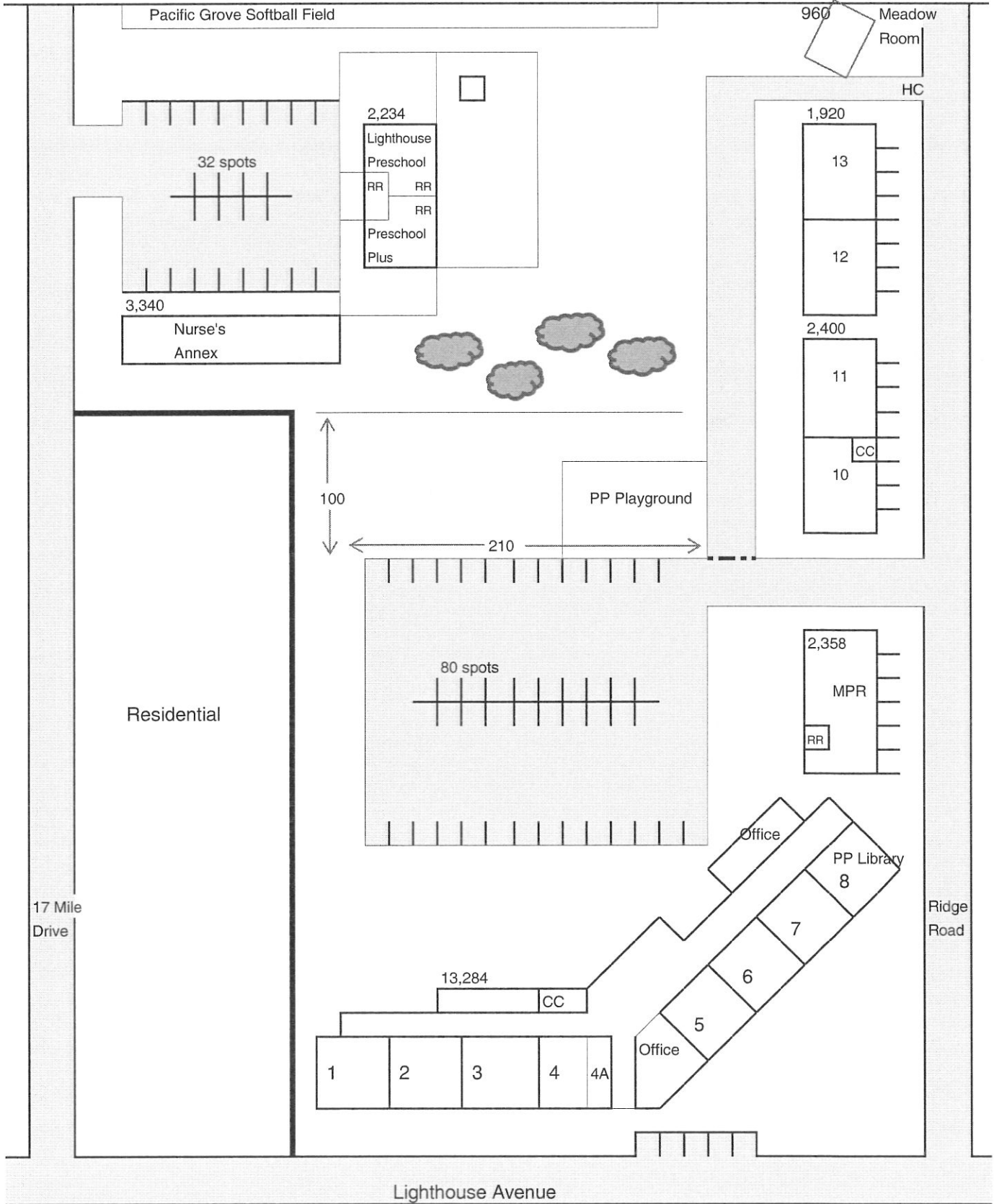
Budget14-15 Maps 3/12/2015 2:01 PM



# Pacific Grove High School - Stadium and Fields



# Pacific Grove Adult School



1025 Lighthouse Avenue, Pacific Grove, CA 93950

(831) 646-6580

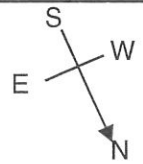
Built in 1948 - 7.177 Acres

25,536 Square Feet

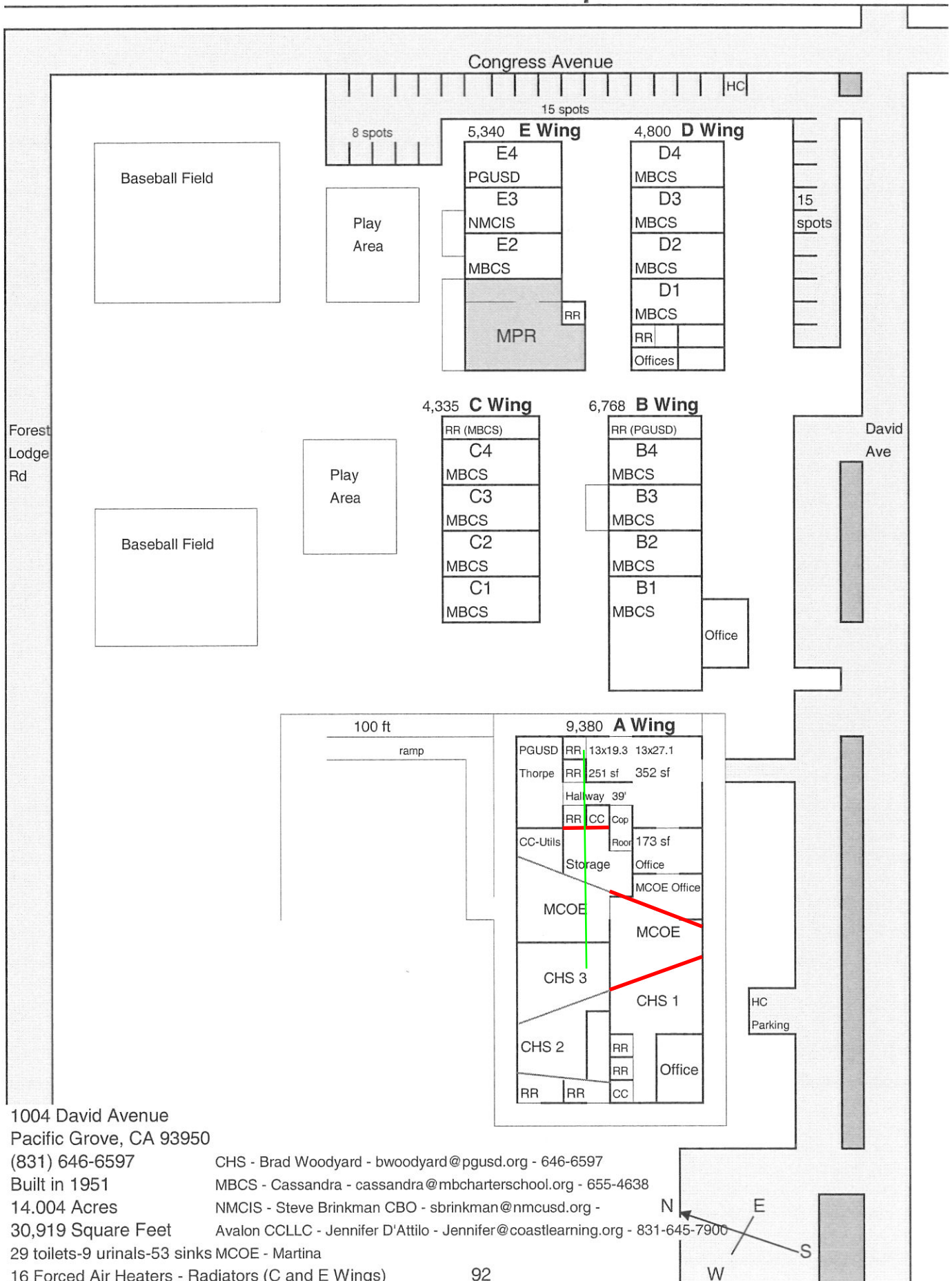
22 toilets - 2 waterless urinals - 29 sinks

1 Heat Pump - 17 Forced Air Heaters

Budget 14-15 Maps 3/12/2015 2:01 PM



# David Avenue Campus



1004 David Avenue  
Pacific Grove, CA 93950

(831) 646-6597

Built in 1951

14.004 Acres

30,919 Square Feet

29 toilets-9 urinals-53 sinks MCOE - Martina

16 Forced Air Heaters - Radiators (C and E Wings)

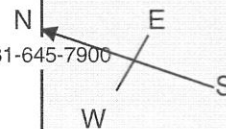
Budget14-15 Maps 3/12/2015 2:01 PM

CHS - Brad Woodyard - bwoodyard@pgusd.org - 646-6597

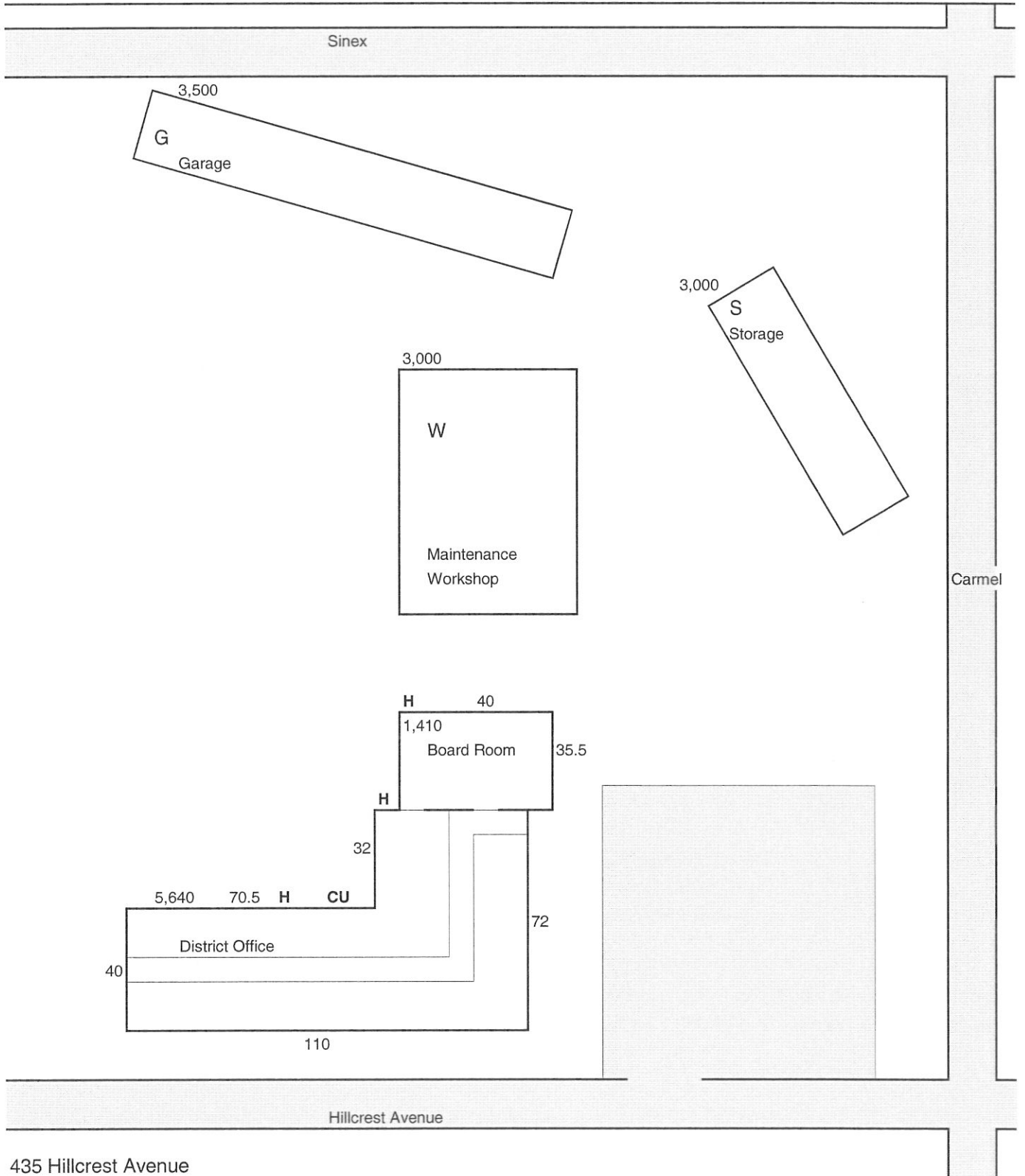
MBCS - Cassandra - cassandra@mbcharterschool.org - 655-4638

NMCIS - Steve Brinkman CBO - sbrinkman@nmcusd.org -

Avalon CCLLC - Jennifer D'Attilo - Jennifer@coastlearning.org - 831-645-7900



# District Office - Maintenance Yard



435 Hillcrest Avenue  
 Pacific Grove, CA 93950  
 (831) 646-6510  
 Built in 2010

Acres  
 16,550 Square Feet  
 6 toilets - 1 waterless urinal - 6 sinks  
 3 Heat Pumps - 1 Furnace