

# Creating Thriving Learning Environments

---

ABM Building Solutions, LLC.

MAR  
**09**  
2023



# Key Takeaways



We know its about making  
more of these moments  
possible

There are challenges that get in  
the way

We can help overcome these  
challenges to create a thriving  
learning environment

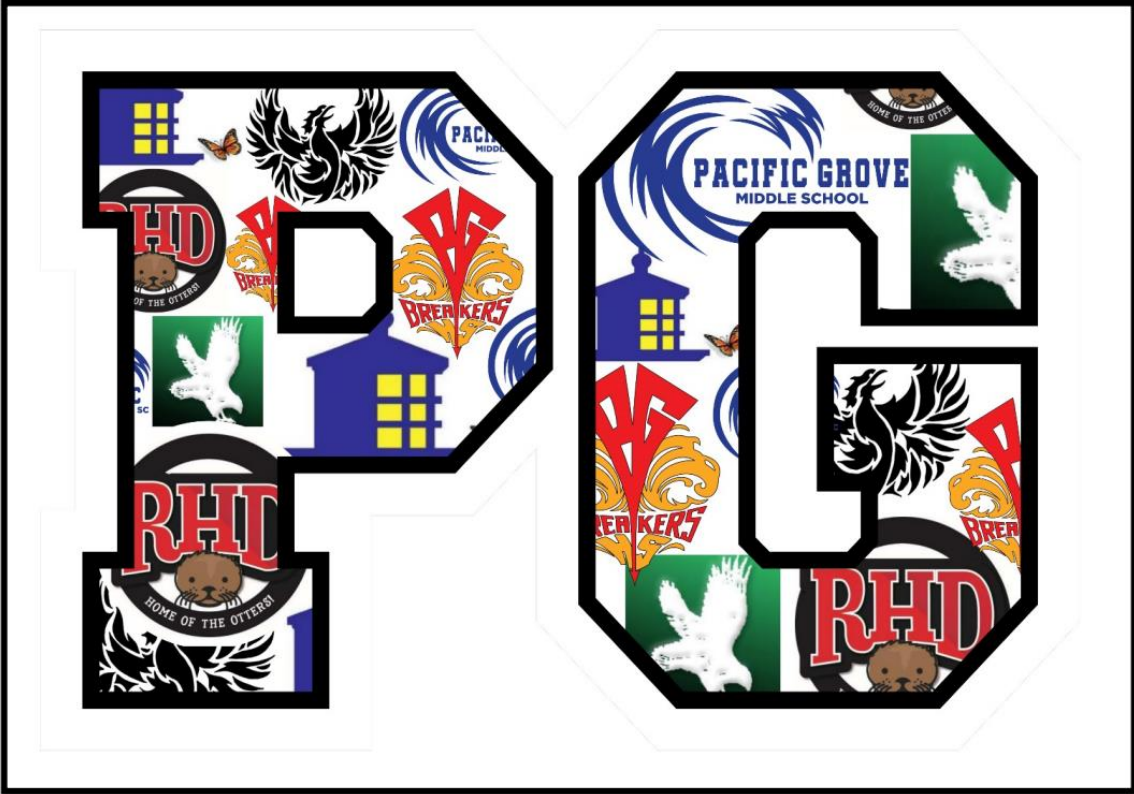
# Characteristics of a Thriving Classroom

1. Safe & Connected\*
2. **Comfortable\***
3. Effective Instruction
4. **Equitable Spending**
5. Embraced Diversity



*\*Sources: Outward Bound & Primary Learning*

# Pacific Grove USD



# Principal's Challenges

## Nearly 1 in 5

How many principals leave each year due to stressors like insufficient funds, poor working conditions, and high-stakes accountability policies



**1/3**

This many principals report that managing facilities is the most time-consuming part of their job.<sup>2</sup>



**75%**

The amount of time that principals should ideally be focusing their attention on instruction.<sup>3</sup>



**59 hours**

The amount of time per week that principals spend on the job, with majority spent on administrative tasks.<sup>4</sup>





# Facility Conditions Matter

1. 5%-17% increase in test scores
2. 14% lower student suspensions
3. Lack of maintenance and building age can lower test scores by 9%



## School Facilities Improve Learning

There is a growing body of research demonstrating that clean air, good light, and a small, quiet, comfortable, and safe learning environment are important for students' academic achievement.

Here are a few examples of the research results:


- ▶ Students who receive instruction in buildings with good environmental conditions can earn test scores that are 5-17 percent higher than scores for students in substandard buildings.<sup>1</sup>
- ▶ There is a negative relationship between classroom noise higher than 40 decibels and student achievement.<sup>2</sup>
- ▶ Schools with better building conditions have up to 14 percent lower student suspension rates.<sup>3</sup>
- ▶ Improving a school's "Overall Compliance Rating" to meet health and safety standards can lead to a 36-point increase in California Academic Performance Index scores.<sup>4</sup>
- ▶ Substandard physical environments are strongly associated with truancy and other behavior problems in students. Lower student attendance led to lower scores on standardized tests in English-language arts and math.<sup>5,6</sup>



- ▶ Students' reading speed, comprehension, and mathematics performance are adversely affected by room temperatures above 74 degrees.<sup>7</sup>
- ▶ Student achievement scores tend to decrease as the school building ages—to as high as 9 percent, depending on maintenance factors.<sup>8</sup>
- ▶ Studies indicate that student performance is improved by an even distribution of daylight, an expansive view, and limited glare and thermal heat gain. One study found 20 percent faster student progress on math and 26 percent faster progress in reading compared with students in classrooms with less exposure to daylight.<sup>9, 10</sup>

- California Department of Education Report 1-2010





The image shows a tablet displaying a video or advertisement. The video features a woman in a white lab coat and a face mask interacting with a young girl in a classroom. The text on the tablet reads: "ABM for K-12 Solutions to create thriving environments for today's schools". The ABM logo is visible in the top right corner of the tablet screen. The background of the tablet is a wooden desk with a spiral notebook and several colored pens.

**ABM**  
Building Value

ABM *for* K-12  
Solutions to create thriving  
environments for today's schools

**ABM**  
Building Value

**ABM** *for* EDUCATION  
**SOLUTIONS TO  
HELP SCHOOLS  
THRIVE NOW.**

## Developing a Long-Term Solution

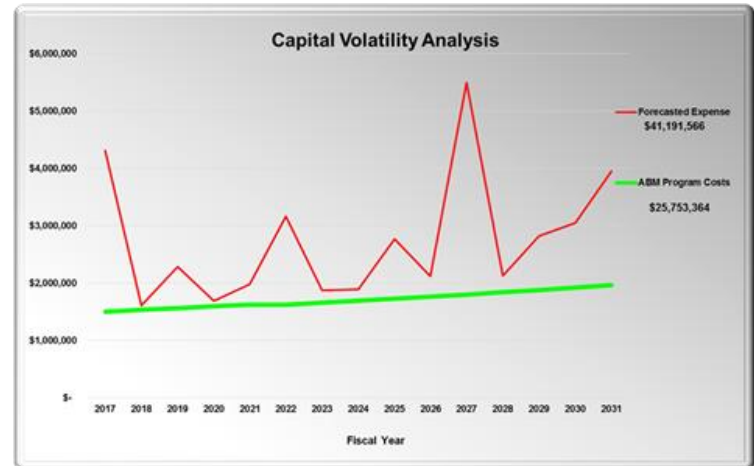
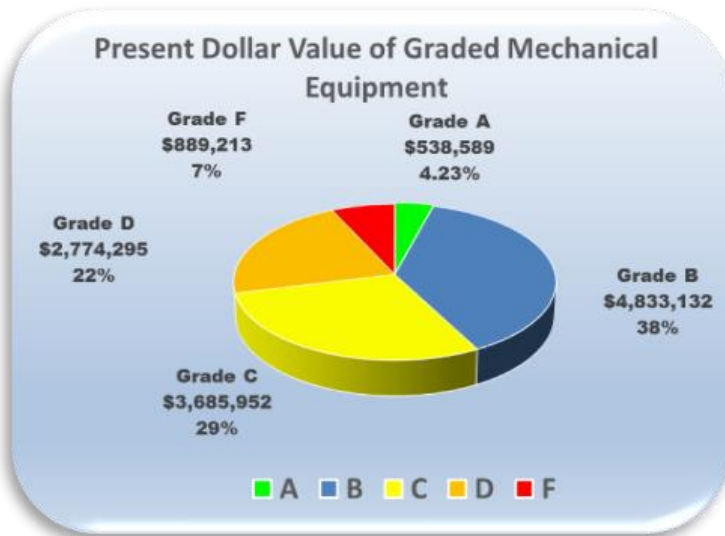
# Non-instructional Spend Analysis



- ✓ Assesses All Non-instructional Spend
- ✓ **Measures Exposure to Deferred Maintenance**
- ✓ **Projects Future Costs**
- ✓ **Review Staffing and Service Level Activities**
- ✓ Design a Fundable Solution
- ✓ Prioritize Action Plan



# Capital Volatility Analysis



# Creating Lower Operating Costs



*Our Facility Expertise Converts Reduced Expenses Into Capital*

# Leveraged Stimulus Funds Examples

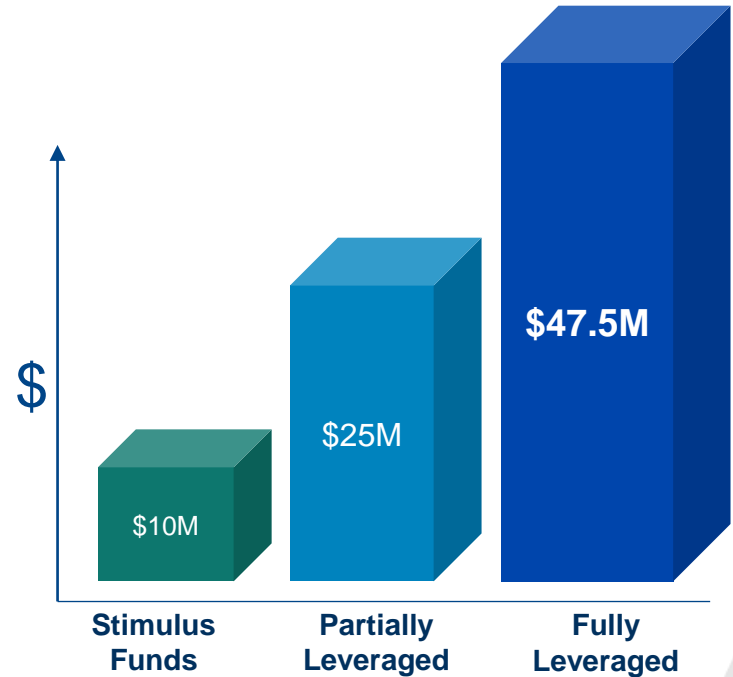
**Stimulus Funds \$10M**

**Operation Savings From  
Stimulus \$1M Annually**

**Non-instructional Spend  
Savings \$1M Annually**

**Other Funding Sources  
\$500k Annually**

**15 Year Term**



We need more of these moments. . .



# ABM at a Glance



Founded in 1909 | \$6.0 Billion in Revenue



350+ U.S. & International Locations



20,000+ Clients | 110,000 Employees



## ELECTRICAL

We've installed **20,000+** EV charging ports across the U.S.



## ENERGY

We've reduced our client's average energy use by **23%**.



## FACILITIES ENGINEERING

Our **3,800+** certified engineers keep buildings running.



## HVAC & MECHANICAL

We service and maintain **70,000+** heating and cooling systems.



## JANITORIAL

Each day, we clean **4+ billion** sq. ft. of buildings.



## LANDSCAPE & TURF

We maintain **55,000+** acres of landscaping & golf courses.



## MISSION CRITICAL

We service and maintain **35+ million** sq. ft. of data center space.



## PARKING & TRANSPORTATION

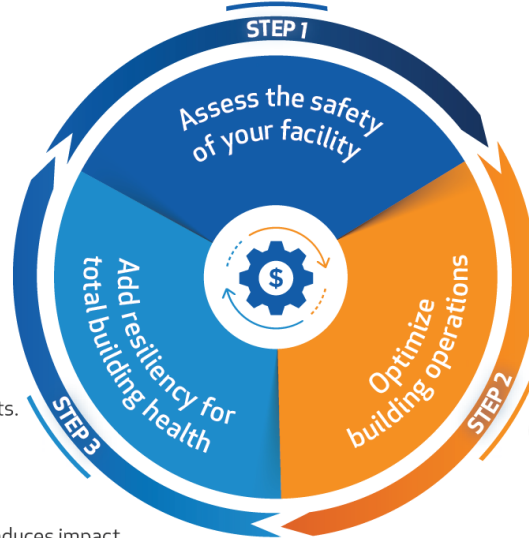
We collect **\$2+ billion** in parking revenue for our clients.

# ENHANCED Facility™



## BUILDING HEALTH RISK ASSESSMENT

- Healthy Building Risk Banding tool
- HVAC inspection
- Turnkey financial solutions



## PREVENTATIVE HVAC MAINTENANCE

- Promotes optimum filtration and disinfection
- Saves energy
- Prevents unnecessary repairs
- Extends the life of your system



## ENERGY EFFICIENCY UPGRADES

Reduces operating costs to move funding into other facility improvements.



## BACK-UP POWER

Increases resiliency and reduces impact on building health during power-outages.



## HVAC SYSTEM OPTIMIZATION

- Methods for improving IAQ and overall building health.
- Ventilation and humidity control
  - Proper filtration
  - HVAC disinfecting technologies
  - Building controls



## DISINFECTING LIGHTING SOLUTIONS

Enables continuous disinfection of air contaminants.



## TOUCHLESS FIXTURES AND DOORS

Reduces the number of high-touch surfaces within a facility.