

Executive Summary

ABM Building Solutions, LLC (“ABM”) met with PGUSD staff at the CASH conference to discuss a potential Government Code 4217 project to address several infrastructure concerns at the District. The main concerns expressed by the Staff were related to Indoor Air Quality, LED lighting and Building Envelope. The District was looking for a partner who could offer services across several technology verticals, and who could operate under Ca Government Code 4217. The plan was to collaborate with the District and assist with all design, engineering and construction elements of Measure D projects and beyond.

ABM was asked by the District to conduct a Preliminary Assessment (PA) of PGUSD’s facilities. Our team conducted site walks over two days to study the existing infrastructure. We also gathered utility, maintenance, and operational expense data to analyze both the facilities and operational expenses of the District. In addition, our team identified other potential areas for improvement, specifically pertaining to water conservation and resiliency. Upon presenting the results of the PA to the Board, the District received direction to move to a Master Development Agreement (MDA) with ABM on May 18th, 2023. The MDA would be performed almost entirely at risk by ABM, with the exception of a \$35,000 fee that would be due to ABM if the District elected not to move forward with a construction agreement.

Over the next 6 months our team worked diligently with District staff to identify, design and engineer over \$40,000,000 of potential infrastructure improvements for the District. This included measures addressing the District’s HVAC and Mechanical units, Lighting Systems, Building Envelope, Water Usage, Electrical Service, Resiliency, and Appliances. During our time at the facilities, we confirmed several of the District’s concerns regarding infrastructure. The existing building design and current HVAC units are not conducive to proper ventilation in most areas across the District. Building Envelope improvements are necessary to prevent infiltration and exfiltration of air, and some Lighting Systems need upgrades. We also identified a critical electrical service modification is needed at the High School. After months of collaboration, our team and District Staff evaluated several options in each category and built a manageable scope that addresses several of the District’s priority projects while delivering savings in accordance with Government Code 4217. The selected measures are described further in Technical Categories below.

About ABM: ABM (NYSE: ABM) is one of the world’s largest providers of facility services and solutions. A driving force for a cleaner, healthier, and more sustainable world, ABM provides essential services and forward-looking performance solutions that improve the spaces and places that matter most. From curbside to rooftop, ABM’s comprehensive services include janitorial, engineering, parking, electrical and lighting, energy and electric vehicle charging infrastructure, HVAC and mechanical, landscape and turf, and mission critical solutions. ABM serves a wide range of industries – from commercial office buildings to K-12, universities, airports, hospitals, data centers, manufacturing plants and distribution centers, entertainment venues and more. Founded in 1909, ABM serves over 20,000 clients, with annualized revenue approaching \$8 billion and more than 100,000 team members in 350+ offices throughout the United States, United Kingdom, Republic of Ireland, and other international locations. For more information, visit www.abm.com

Pacific Grove Unified School District Scope Summary Table

TC#	Technical Category	Page #
3.1	Building Automation System Upgrades	3
4.1	HVAC Upgrades	3
5.1	LED Stadium Lighting	9
5.2	LED Lighting	10
6.1	Building Envelope Modifications	14
12.1	Electrical Service Upgrade	15
12.2	Resiliency / Generator	15
13.1	Water Conservation	16
19.1	Appliance Upgrades	25

Technical Category #3.1

Building Automation System Upgrades

Across the district the existing controls consist of a combination of pelican thermostats and local thermostats that control the HVAC units throughout the classrooms and common spaces. The existing controls mainly only have the capability for scheduling and temperature control of each unit in select areas. The current systems also lack the capability to control ventilation and outside air intake, compromising indoor air quality.

Since the controls go hand in hand with the mechanical upgrades, the District and ABM worked together to prioritize areas and schools to include in the budgeting of this project. Forest Grove Elementary and the Robert Down Elementary Kinder Wing were selected as the final scope of work. ABM is planning on installing new economizer controls as part of the existing control system. The new economizer controls will have the capability to control outside air intake/ventilation, utilize energy efficiency strategies such as economizer and demand control ventilation, and to close outside air dampers during “danger days”.

Technical Category #4.1

HVAC Upgrades

ABM performed an HVAC equipment survey of all the major mechanical equipment districtwide. During the survey ABM graded each piece of equipment (A-F) depending on its age, condition, and operational status. ABM worked with the District to prioritize unit replacements based on the budget of the project. The final scope of work for this phase includes Forest Grove Elementary and the Kinder Wing at Robert Down Elementary. At Forest Grove ES the scope is to replace the gas fired furnaces and bard units with high efficiency units and to add mixing boxes with dampers to allow for proper ventilation and control. Merv-13 filters are also to be added. At the Robert Down Kinder Wing the scope is to replace the existing gas fired furnaces with heat pump units to add cooling to the space. There will also be duct work installed in each classroom to allow for proper air distribution, along with Merv-13 filters for improved ventilation.

Listed below is the mechanical survey/analysis per campus.

BUILDING NAME	Tag	Grade	Manufacturer	Model	Serial	Install Date
District Office	F-1	C	Lennox	G51MP-36B-070-07	5910H34251	2010
District Office	DHW-1	C	Ariston	GL 4Ti	3.60504E+21	2010
District Office	DHW-2	C	Bradford White	LD30L33B090	GF13555072	2010
District Office	RTU-1	C	Trane	YHC063A3RYA041Z	945100261L	2009
District Office	RTU-2	C	Trane	YHC063A3RYA041Z	945100271L	2009
District Office	RTU-3	C	Trane	YHC063A3RYA041Z	945100251L	2009
District Office	MS-1	C	Mitsubishi	PUY-A18NHA3		2009
District Office	MS-1	C	Mitsubishi	PKA-A18HA		2009
District Office	DHW-3	C	A.O. Smith	DSE 20A	0911R000038	2009

ABM – SCOPE OF WORK SUMMARY

BUILDING NAME	Tag	Grade	Manufacturer	Model	Serial	Install Date
Forest Grove	F-1-A	D	Armstrong Air	G1D91AU075D12B-1	S1601B15518	2001
Forest Grove	F-2-A	D	Armstrong Air	G1D91AU050D12B-2A	8401F38560	2001
Forest Grove	F-3-A	D	Armstrong Air	G1D91AU050D12B-2A	8401F38551	2001
Forest Grove	F-4-A	D	Armstrong Air	G1D91AU050D12B-2A	8401F38561	2001
Forest Grove	F-5-A	D	Armstrong Air	LG14-350B40-2A	8400H21183	2000
Forest Grove	F-6-A	D	Armstrong Air	LG14-350B40-2A	8400H21184	2000
Forest Grove	F-7-A	D	Armstrong Air	G1D91AU100D20C-1	S1601A13844	2001
Forest Grove	F-1-B	D	Armstrong Air	G1D90AH075D14A-2A	8401F35309	2001
Forest Grove	F-2-B	D	Armstrong Air	G1D90AH075D14A-2A	8401F35334	2001
Forest Grove	F-3-B	D	Armstrong Air	G1D90AH075D14A-2A	8401F35317	2001
Forest Grove	F-4-B	D	Armstrong Air	G1D90AH075D14A-2A	8401F36318	2001
Forest Grove	F-1-C	D	Armstrong Air	G1D90AH075D14A-2A	8401F35320	2001
Forest Grove	F-2-C	D	Armstrong Air	G1D90AH075D14A-2A	8401F35305	2001
Forest Grove	F-3-C	D	Armstrong Air	G1D90AH075D14A-2A	8401F35323	2001
Forest Grove	F-4-C	D	Armstrong Air	G1D90AH075D14A-2A	8401F35311	2001

BUILDING NAME	Tag	Grade	Manufacturer	Model	Serial	Install Date
Forest Grove	F-1-D	D	Armstrong Air	G1D90AH075D14A-2A	8401F35333	2001
Forest Grove	F-2-D	D	Armstrong Air	G1D90AH075D14A-2A	8401F35321	2001
Forest Grove	F-3-D	D	Armstrong Air	G1D90AH075D14A-2A	8401F35310	2001
Forest Grove	F-4-D	D	Armstrong Air	G1D90AH075D14A-2A	8401F35322	2001
Forest Grove	F-1-G	D	Armstrong Air	G1D90AH075D14A-3A	8403E17725	2003
Forest Grove	F-2-G	D	Armstrong Air	G1D90AH075D14A-3A	8403G12784	2003
Forest Grove	F-3-G	D	Armstrong Air	G1D90AH075D14A-3A		2003
Forest Grove	F-4-G	D	Armstrong Air	G1D90AH075D14A-3A		2003
Forest Grove	F-5-G	D	Armstrong Air	G1D90AH075D14A-3A		2003
Forest Grove	F-6-G	D	Armstrong Air	G1D90AH075D14A-3A		2003
Forest Grove	F-7-G	D	Armstrong Air	G1D91AU050D12B-2A	8402H11579	2002
Forest Grove	F-1-K	D	Armstrong Air	G1D90AH100D20B-2A	8401F12010	2001
Forest Grove	F-2-K	D	Armstrong Air	G1D90AH100D20B-2A	8401F12007	2001
Forest Grove	HP-1	D	Bard	WH361-A05XX4XXX	125D981221486-02	1998
Forest Grove	HP-2	D	Bard	WH361-A05XX4XXX	125D981221476-02	1998
Forest Grove	HP-3	B	Marvair	AVHA42HPA050NB-U-A5-200	DJ-F167172-0-3	2019
Forest Grove	HP-4	C	Marvair	AVP42HPA10NB-10000 BI	DL44197	2000
Forest Grove	HP-5	C	Marvair	AVP60HPA10NB-10000 CI	AL36278	2000
Forest Grove	HP-6	B	Marvair	TH42S05MGP	MG-F155880-0-5	2017
Forest Grove	HP-7	D	Bard	WH482-A10VX4XXX	149H991362690-02	1999
Forest Grove	HP-8	B	Bard	W60H1-A05XX4XXX	324H122918160-02	2012
Forest Grove	HP-9	D	Bard	45WH1-A08CD004	104K910694411	1991
Forest Grove	HP-10	C	Bard	WH602-A05VP4XXX	153B052000679-02	2005
Forest Grove	DHW-1	B	Bradford White	75T80B3N	GB12932140	2010
Forest Grove	DHW-2	B	Bradford White	LD30L33B090	GF13555073	2010

ABM – SCOPE OF WORK SUMMARY

BUILDING NAME	Tag	Grade	Manufacturer	Model	Serial	Install Date
Robert Down Elem.	Boiler - 1	C	RBI	33HW0630NE2ACPS	90229313	2013
Robert Down Elem.	HWP-1	C	Baldor	35D15Y168	F0408020252	2004
Robert Down Elem.	HWP-2	D	Baldor	35D15Y168		2004
Robert Down Elem.	AH-1	D	Trane	CCDB12AU0F	K86G09895	1995
Robert Down Elem.	AH-2	D	Trane	CCDB12AU0F	K86G09896	1995
Robert Down Elem.	F-A-1	D	Goettl	GC-060C	1350042	1992
Robert Down Elem.	F-A-2	D	Goettl	GC-060C	1350048	1992
Robert Down Elem.	F-A-3	D	Goettl	GC-060C	1350039	1992
Robert Down Elem.	F-1	D	Armstrong Air	G1D91BT050D12B-1A	8404G11554	2004
Robert Down Elem.	F-2	D	Armstrong Air	G1D91BT075D16C-1A	8404G08228	2004
Robert Down Elem.	F-3	D	Armstrong Air	G1D91BT050D12B-1A	8404G08427	2004
Robert Down Elem.	F-4	D	Armstrong Air	G1D91BT075D16C-1A	8404G06552	2004
Robert Down Elem.	F-5	D	Armstrong Air	G1D91BT050D12B-1A	8404G08268	2004
Robert Down Elem.	F-6	D	Armstrong Air	G1D91BT075D16C-1A		2004
Robert Down Elem.	F-7	D	Armstrong Air	G1D91BT075D16C-1A		2004
Robert Down Elem.	F-8	D	Armstrong Air	G1D91BT075D16C-1A		2004
Robert Down Elem.	F-9	D	Armstrong Air	G1D91BT075D16C-1A		2004
Robert Down Elem.	F-10	D	Armstrong Air	G1D91BT075D16C-1A		2004
Robert Down Elem.	F-11	D	Armstrong Air	G1D91BT075D16C-1A		2004
Robert Down Elem.	F-13	D	Armstrong Air	G1D91BT075D16C-1A		2004

BUILDING NAME	Tag	Grade	Manufacturer	Model	Serial	Install Date
Robert Down Elem.	F-14	D	Armstrong Air	G1D91BT075D16C-1A		2004
Robert Down Elem.	F-15	D	Armstrong Air	G1D91BT075D16C-1A		2004
Robert Down Elem.	F-16	D	Armstrong Air	G1D91BT075D16C-1A		2004
Robert Down Elem.	F-17	D	Armstrong Air	G1D91BT075D16C-1A		2004
Robert Down Elem.	F-18	D	Armstrong Air	G1D91BT075D16C-1A		2004
Robert Down Elem.	F-19	D	Armstrong Air	G1D91BT075D16C-1A		2004
Robert Down Elem.	F-20	D	Armstrong Air	G1D91BT075D16C-1A		2004
Robert Down Elem.	F-21	D	Armstrong Air	G2D80AT075D14B-2A	1604D05706	2004
Robert Down Elem.	Heater #3	D	Armstrong Air	G2D80AT100D20C-2A	1604F12629	2004
Robert Down Elem.	UH-1	D	Dayton			2004
Robert Down Elem.	UH-2	D	Reznor	F165-E-2	BDH65X2N39244X	2004
Robert Down Elem.	UH-3	D	Reznor	F165-E-2	BDH65X2N39243X	2004
Robert Down Elem.	UV-1	D	Marvair	AVP42HPA10NB-1000	EL44906	2000
Robert Down Elem.	UV-2	D	Marvair	AVP42HPA10NB-1000	DL44183	2000
Robert Down Elem.	UV-3	D	Marvair	AVP42HPA10NB-1000		2000
Robert Down Elem.	UV-4	D	Bard	WH482-A10VX4XXX	149H991362686-02	1999
Robert Down Elem.	UV-5	D	Bard	WH421-A10VX4XXX	126H971124578-02	1997
Robert Down Elem.	UV-6	D	Bard	WH421-A10VX4XXX	126H971124270-02	1997
Robert Down Elem.	UV-7	D	Bard	WH421-A10VX4XXX	126H971122479-09	1997
Robert Down Elem.	DHW-1	B	Bradford White	RE120U6-1NAL	SK42231084	2018
Robert Down Elem.	DHW-2	B	Bradford White	LD6U31B030		2018
Robert Down Elem.	DHW-3	D	Bradford White	LD6U31B030	AC234460039	2004
Robert Down Elem.	DWH-4	C	Bradford White	50T65FB3N	FG12213482	2009

ABM – SCOPE OF WORK SUMMARY

BUILDING NAME	Tag	Grade	Manufacturer	Model	Serial	Install Date
Pacific Grove Middle School	Boiler-1	C	HydroTherm	KN-6	KN-H-NET-M10N-4439	2010
Pacific Grove Middle School	HWP-1	D	Marathon Electric	NVJ143TTDR736OAE		2010
Pacific Grove Middle School	HV-1	D	Modine	HFG150SMRLN20D2	1023303-6120	2003
Pacific Grove Middle School	HV-2	D	Modine	HFG125SMRLN20D2	1023303-6121	2003
Pacific Grove Middle School	HV-3	D	Modine	HFG125SMRLN20D2	1023303-6122	2003
Pacific Grove Middle School	HV-4	D	Modine	HFG125SMRLN20D2	1023303-6123	2003
Pacific Grove Middle School	HV-5	D	Modine	HFG150SMRLN20D2	1023303-6124	2003
Pacific Grove Middle School	HV-6	D	Modine	HFG125SMRLN20D2	1023303-6125	2003
Pacific Grove Middle School	HV-7	D	Modine	HFG225SMRLN20D2	1023303-6126	2003
Pacific Grove Middle School	HV-8	D	Modine	HFG150SMRLN20D2	1023303-6127	2003
Pacific Grove Middle School	HV-9	D	Modine	HFG100SMRLN20D2	1023303-6128	2003
Pacific Grove Middle School	HV-10	D	Modine	HFG125SMRLN20D2	1023303-6129	2003
Pacific Grove Middle School	HV-11	D	Modine	HFG125SMRLN20D2	1023303-6130	2003
Pacific Grove Middle School	HV-12	D	Modine	HFG200SMRLN20D2	1023303-6131	2003
Pacific Grove Middle School	HV-13	D	Modine	HFG150SMRLN20D2	1023303-6132	2003
Pacific Grove Middle School	HV-14	D	Modine	HFG225SMRLN20D2	1023303-6133	2003
Pacific Grove Middle School	MS-1	B	Mitsubishi	PUY-A36NHA6	41U00932B	2015
Pacific Grove Middle School	MS-1	B	Mitsubishi			2015
Pacific Grove Middle School	HV-Gym	C				
Pacific Grove Middle School	MAU-1	C	Greenheck	MSX-112-H12		2010
Pacific Grove Middle School	HV-Auditorium	D	Aaon	TBA-650/RA	CN-4171	2003
Pacific Grove Middle School	HV-1 Music	C	Carrier	48ESN024040301	4008G11951	2008
Pacific Grove Middle School	HV-2 Music	C	Reznor	RDH175-2	BHK78Y8N05734	2008
Pacific Grove Middle School	HV-3 Music	D	York			
Pacific Grove Middle School	UH-1	D	Modine	BSH170AV0530	15102053302-4623	2002
Pacific Grove Middle School	UH-2	D	Modine	BSH170AV0530	15102050800-4670	2000
Pacific Grove Middle School	UH-3	D	Modine	BSH170AV0530	15102050800-4671	2000
Pacific Grove Middle School	UV-1	C	Bard	WH421-A05VP4XXX	126H092627579-02	2009
Pacific Grove Middle School	UV-2	C	Bard	W42H1-A04VP4XXX	332P102764877-02	2010
Pacific Grove Middle School	UV-3	C	Bard	W42H1-A04VP4XXX	332C112783522-02	2011
Pacific Grove Middle School	UV-4	C	Bard	W42H1-A05XX4XXX	332H102713770-02	2010
Pacific Grove Middle School	DHW-1	D	Kenmore	153.337463	E01321858	2001
Pacific Grove Middle School	DHW-2	B	Rheem	G75-75N-2	RRLNQ181336480	2013
Pacific Grove Middle School	DHW-3	B	Bradford White	RG275H6N	MF36349303	2015
Pacific Grove Middle School	Exhaust Fans (10 EA)	C	Centri Master			2003

BUILDING NAME	Tag	Grade	Manufacturer	Model	Serial	Install Date
Adult School	UH-1	D	Reznor	BE50	ARK66M4N61223	1992
Adult School	UH-2	C	Lennox	LF24-45A-5		2004
Adult School	UH-3	C	Lennox	LF24-45A-5		2004
Adult School	UH-4	C	Lennox	LF24-45A-5	56004H39804	2004
Adult School	UH-5	C	Lennox	LF24-45A-5		2004
Adult School	F-1	C	Lennox	G50UH-36A-070-07	5904K01867	2004
Adult School	UH-6	C	Lennox	LF24-45A-5		2004
Adult School	F-2	C	Lennox	G50UH-36A-070-07	5904K01864	2004
Adult School	UH-7	C	Lennox	LF24-45A-5		2004
Adult School	UH-8	C	Lennox	LF24-45A-5		2004
Adult School	UH-9	C	Lennox	LF24-100A-5	56004G12387	2004
Adult School	UH-10	C	Lennox	LF24-45A-5		2004
Adult School	UH-11	C	Lennox	LF24-45A-5		2004
Adult School	UH-12	C	Lennox	LF24-45A-5		2004
Adult School	UH-13	C	Lennox	LF24-45A-5		2004
Adult School	F-3	C	Bryant	311JAV024070	4409A16002	2009
Adult School	F-4	C	Bryant	311JAV024070	4609A15650	2009
Adult School	UV-1	C	Bard	WH421-A05VP4XXX	126F092624292-02	2009
Adult School	UV-2	B	Bard	W42HA-A04CP4XXX	362D183545422-02	2018
Adult School	UV-3	B	Bard	W42HA-A04CP4XXX	362D183545425-02	2018
Adult School	DHW-1	D	American Water Heaters	Q51-30T33-3N	9327300876	1993
Adult School	DHW-2	C	Ariston	GL 2.5Ti	3.60504E+21	2009

ABM – SCOPE OF WORK SUMMARY

BUILDING NAME	Tag	Grade	Manufacturer	Model	Serial	Install Date
Community HS	1	C	York	PT8A12L060UH11A	WGNM074893	2004
Community HS	2	C	York	PT8C20L100UH11B	W0B5555748	2005
Community HS	3	C	York	PT8C20L120UH11B	W0N4287802	2004
Community HS	4	C	York	PT8A12L060UH11A	WGNM074934	2004
Community HS	5	C	York	PT8A12L060UH11A	WGNM074920	2004
Community HS	6	C	York	PT8A12L060UH11A		2004
Community HS	DHW-1	C	Bradford White	M430T6FBN7	BE6205267	2005
Community HS	DHW-2	B	Bradford White	RG240T6N	MD361111175	2015

BUILDING NAME	Tag	Grade	Manufacturer	Model	Serial	Install Date
Pacific Grove High School	B-1	C	Raypak	P-1504A	1912499966	2012
Pacific Grove High School	B-2	C	Raypak	P-1504A	1912499967	2012
Pacific Grove High School	HWP-B1	C	Taco			2012
Pacific Grove High School	HWP-B1	C	Taco			2012
Pacific Grove High School	HWP-B2	C	Taco			2012
Pacific Grove High School	HWP-B2	C	Taco			2012
Pacific Grove High School	CO2 Tank	B	Chart	20647911	32016176	2012
Pacific Grove High School	Pool Circ Pump	C	US Motors	13792936		2012
Pacific Grove High School	Boiler-1	C	Aerco	KC-1000	G-02-0567	2002
Pacific Grove High School	HWP-B Motor	C	Baldor	34G452Y094		2007
Pacific Grove High School	HWP-B Pump	C	Bell & Gossett	60-1.5x6.25	PRO-2097	2002
Pacific Grove High School	HWP-C Motor	C	AO Smith	C250	260075M	2002
Pacific Grove High School	HWP-C Pump	C	Bell & Gossett	60-1.5x6.25		2002
Pacific Grove High School	HWP-A Motor	C	AO Smith	C250	071075M	2007
Pacific Grove High School	HWP-A Pump	C	Bell & Gossett	60-1.5x6.25		2002
Pacific Grove High School	Baseboard (32 EA)	D				2000
Pacific Grove High School	BUV-1	D	Trane	VUVB15010H0H1ACQ01B41AA100A01110		2002
Pacific Grove High School	BUV-2	D	Trane	VUVB15010H0H1ACQ01B41AA100A01110	W99H42812	2002
Pacific Grove High School	BUV-3	D	Trane	VUVB15010H0H1ACQ01B41AA100A01110	W99H42814	2002
Pacific Grove High School	BUV-4	D	Trane	VUVB15010H0H1ACQ01B41AA100A01110		2002
Pacific Grove High School	BUV-5	D	Trane	VUVB15010H0H1ACQ01B41AA100A01110		2002
Pacific Grove High School	CUV-1	D	Trane	VUVB15010H0H1ACQ01B41AA100A01110		2002
Pacific Grove High School	FC-3	D	Magic Aire	90-BVW/BVX-A	W020738774	2002
Pacific Grove High School	FC-C-1	B	Magic Aire	DCU12BAAS1BBAM	W100635986	2010
Pacific Grove High School	CUV-3	D	Trane	VUVB15010H0H1ACQ01B41AA100A01110		2002

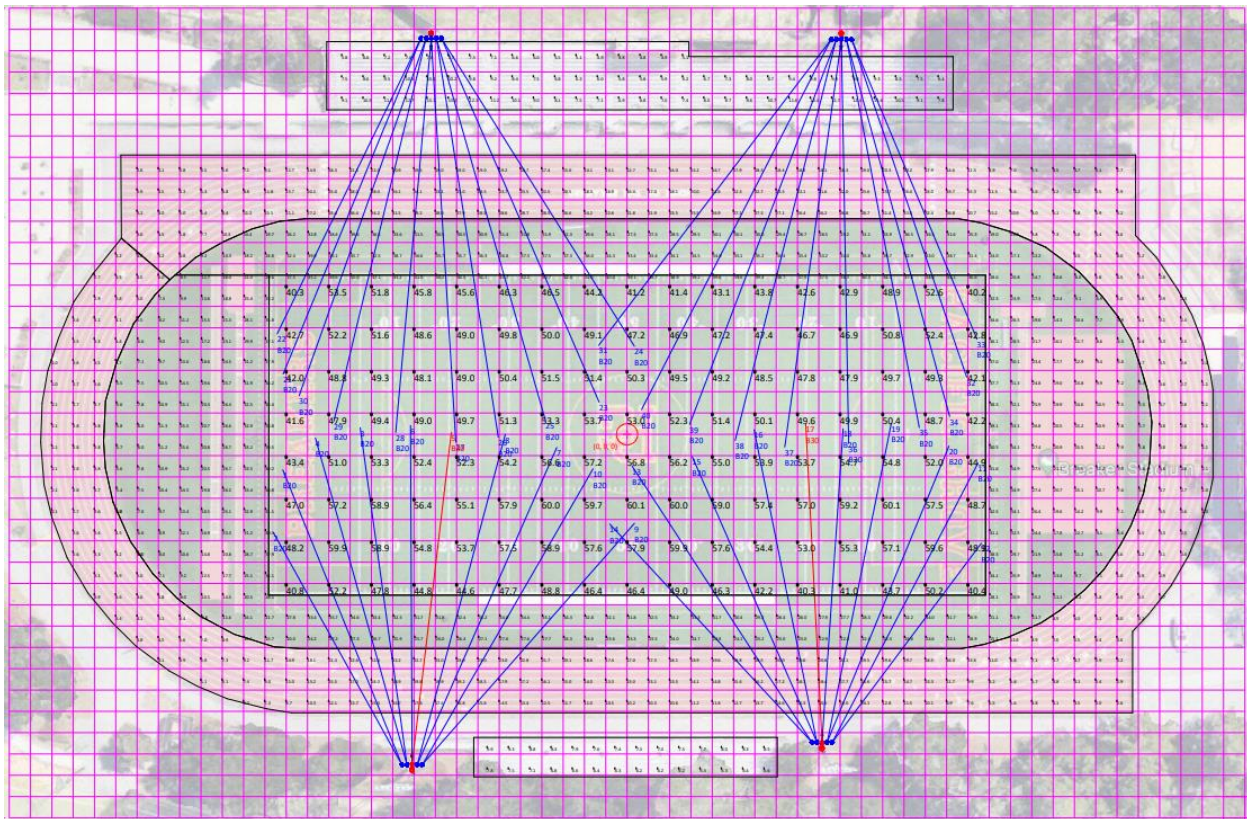
ABM – SCOPE OF WORK SUMMARY

BUILDING NAME	Tag	Grade	Manufacturer	Model	Serial	Install Date
Pacific Grove High School	F-D-1	B	Bryant	311JAV048090	2610A30423	2010
Pacific Grove High School	F-D-2	B	Bryant	311JAV048090	2610A30415	2010
Pacific Grove High School	F-D-3	B	Bryant	311JAV048090	2610A30428	2010
Pacific Grove High School	F-E-4	D	Armstrong Air	G2D80AT075D14BL-1A	1602F35623	2002
Pacific Grove High School	F-E-3	D	Armstrong Air	G2D80AT075D14BL-1A	1602F35622	2002
Pacific Grove High School	F-E-2	D	Armstrong Air	G2D80AT100D20CL-1A	1601G18923	2001
Pacific Grove High School	F-E-1	D	Armstrong Air	G2D80AT075D14BL-1A	1602F35625	2002
Pacific Grove High School	F-F-4	D	Armstrong Air	G2D80AT075D14BL-1A	1602F35619	2002
Pacific Grove High School	F-F-3	D	Armstrong Air	G2D80AT075D14BL-1A	1602F35624	2002
Pacific Grove High School	F-F-2	D	Armstrong Air	G2D80AT075D14BL-1A	1602F35615	2002
Pacific Grove High School	F-F-1	D	Armstrong Air	G2D80AT075D14BL-1A	1602F35625	2002
Pacific Grove High School	F-H-1	D	Trane	GLND040AEF1000M	L02F41403	2002
Pacific Grove High School	F-H-2	D	Trane	GLND035AEF1000M	L02E41404	2002
Pacific Grove High School	F-I-1	D	Armstrong Air	G2D80AT125D20CL-1A	1602F42632	2002
Pacific Grove High School	F-I-2	D	Armstrong Air	G2D80AT150D20DL-1A	1602F35389	2002
Pacific Grove High School	MUA (4 EA)	A				2022
Pacific Grove High School	EF (4 EA)	A				2022
Pacific Grove High School	F-K-1	D	Armstrong Air	G1D80AT125D20C		2002
Pacific Grove High School	F-K-2	D	Armstrong Air	G1D80AT125D20C		2002
Pacific Grove High School	F-K-3	D	Armstrong Air	G1D80AT125D20C		2002
Pacific Grove High School	F-K-4	D	Armstrong Air	G1D80AT125D20C		2002
Pacific Grove High School	F-L-1	D	Armstrong Air	G1D80AT125D20C		2002
Pacific Grove High School	F-L-2	D	Armstrong Air	G1D80AT125D20C		2002
Pacific Grove High School	F-L-3	D	Armstrong Air	G1D80AT125D20C		2002
Pacific Grove High School	F-L-4	D	Armstrong Air	G1D80AT125D20C		2002
Pacific Grove High School	F-N-1	D	Trane	GMND040AEF10000	L02F41402	2002
Pacific Grove High School	F-N-2	D	Armstrong Air	G2D80AT150D20DL-1A	1602F35390	2002
Pacific Grove High School	OUV-1	D	Bard			2002
Pacific Grove High School	OUV-2	D	Bard			2002
Pacific Grove High School	OUV-3	D	Bard			2002
Pacific Grove High School	F-O-1	D	Armstrong Air	G2D80AT150D20DL-1A	1602G14536	2002
Pacific Grove High School	F-O-2	D	Trane	GMND020AEF10000	L02F41401	2002
Pacific Grove High School	F-Kitchen-1	B	Bryant	311JAV036070	1510A17692	2010
Pacific Grove High School	F-MPR-1	C	Reznor	CAUA250-S-2	EBJF78X3N02083	2010
Pacific Grove High School	F-MPR-2	C	Reznor	CAUA400-S-2	EBJF78X3N02085	2010
Pacific Grove High School	F-MPR-3	C	Reznor	CAUA400-S-2	EBJF78X3N02084	2010
Pacific Grove High School	F-MPR-4	C	Armstrong Air	GT091BT075D128-1A	8405L14350	2005
Pacific Grove High School	F-Q-1	D	Jackson & Church	SDF-30-G2FI	894-490	2002
Pacific Grove High School	F-Q-2	D	Jackson & Church	SDF-30-G2FI	894-491	2002
Pacific Grove High School	F-Q-3	D	Jackson & Church	SDF-30-G2FI	894-489	2002
Pacific Grove High School	F-Q-4	D	Jackson & Church	SDF-30-G2FI	894-492	2002
Pacific Grove High School	F-R-1	B	Reznor	CAUA300-S-2	EBKD78X3N01433	2011
Pacific Grove High School	F-S-1	B	Reznor	CAUA300-S-2	EBKD78X3N01434	2011
Pacific Grove High School	F-S-2	B	Reznor	CAUA300-S-2	EBKD78X3N01432	2011
Pacific Grove High School	UH-P-1	C	Reznor	SCE 150		2002
Pacific Grove High School	UH-O-1	C	Reznor	SCE 150		2002
Pacific Grove High School	EH-P-1	C	Markel	DBCF		2002
Pacific Grove High School	EH-P-2	C	Markel	DBCF		2002
Pacific Grove High School	DWH-1	C	Ariston	GL 2.5Ti	3.60504E+21	2010
Pacific Grove High School	DWH-2	C	Ariston	GL 2.5Ti	3.60504E+21	2011
Pacific Grove High School	DWH-3	C	Ariston	GL 2.5Ti	3.60504E+21	2010
Pacific Grove High School	DWH-4	B	Bradford White	R240T6N	PA3BB90596	2015
Pacific Grove High School	DWH-5	D	Vanguard	3WA67	906212938	2006
Pacific Grove High School	DWH-6	B	Bradford White	EF100T250E3N2	GD13293683	2010
Pacific Grove High School	DWH-7	A	Bradford White	RG275H6N	TM44367897	2019
Pacific Grove High School	DWH-8	D	Vanguard	3WA54	VLGN 0205104169	2005
Pacific Grove High School	DWH-9	C	Bradford White	LD20L	EJ111110380	2008
Pacific Grove High School	DWH-10	C	Bradford White	LD20L	GM14222966	2010
Pacific Grove High School	DWH-11	D	Reliance Water Heater	5 40 20RT973	D99460182	1999
Pacific Grove High School	DWH-12	C	Bradford White	D75T1253N	EH10905541	2008
Pacific Grove High School	REFRIG-Condenser	C	Cooltec	CRS-4	95173	2010
Pacific Grove High School	REFRIG-Evaporator	C	Heatcraft	ADT156AEK	T09M09594	2010
Pacific Grove High School	REFRIG-Evaporator	C	Heatcraft	LET180BEK	T10T13733	2010

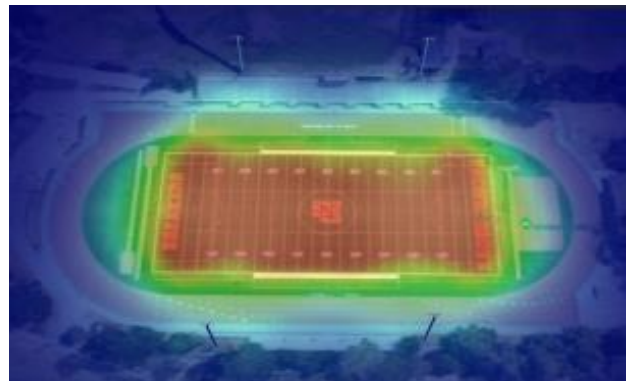
Technical Category #5.1

LED Stadium Lighting

The high school football stadium currently has metal halide fixtures that light the field and surrounding area. The scope of work is to remove the existing fixtures and install new LED fixtures to improve efficiency as well as improve light levels and light distribution. Below is a photometric analysis showing the updated lighting levels for the new lighting at the stadium. We also included renderings showing a heat map and a photorealistic image of the field with the new lighting.



Render Views:



Technical Category #5.2

LED Lighting

The district has LED lighting in a good portion of the schools district wide. However, there are certain areas including classrooms, offices, storage areas, and exterior areas that have not been converted to LED. ABM recommends replacing existing non-LED fixtures with LED fixtures utilizing a combination of LED tubes, retrofit kits, and new fixtures. ABM also recommends installing occupancy sensors in areas that currently don't have them. Listed below are the fixture counts and scopes of work for each school.

Pacific Grove High School			
Existing Fixture Family	Action	Proposed	Qty
Shoobox Parking Lot Pole 400 HPS	New	New LED Area Light – Direct Mount 400W Equivalent	16
None	New	New LED Flood Light for Pool	4
Gooseneck Area Light 175W HPS	Retrofit	Retrofit with LED Replacement Lamp	1
4' 1 Lamp T8 Fluorescent Wrap	Retrofit	Retrofit with 1-4' Type B TLED	24
4' 2 Lamp T8 Fluorescent Wrap	Retrofit	Retrofit with 2-4' Type B TLED	31
4' 2 Lamp T8 Fluorescent Troffer	Retrofit	Retrofit with 3-4' Type B TLED	86
8' 4 Lamp T8 Fluorescent Strip	Retrofit	Retrofit with 4-4' Type B TLED	46
12' 6 Lamp T8 Fluorescent Strip	Retrofit	Retrofit with 6-4' Type B TLED	6
Switch	New	Install Ceiling Mounted Occupancy Sensor	33
Switch	New	Install Wall Mounted Occupancy Sensor	15

Community High School			
Existing Fixture Family	Action	Proposed	Qty
4' 2 Lamp T8 Fluorescent Wrap	Retrofit	Retrofit with 2-4' Type B TLED	2
4' 4 Lamp T8 Fluorescent Wrap	Retrofit	Retrofit with 4-4' Type B TLED	8
Switch	New	Install Ceiling Mounted Occupancy Sensor	17

Adult School			
Existing Fixture Family	Action	Proposed	Qty
Canopy Fixture with 1-150W HID	New	New LED Canopy	1
Wallpack 175W HID	New	New LED Wallpack	4
4' 1 Lamp T8 Fluorescent Wrap	Retrofit	Retrofit with 1-4' Type B TLED	1
4' 2 Lamp T8 Fluorescent Troffer	Retrofit	Retrofit with 2-4' Type B TLED	34
Switch	New	Install Ceiling Mounted Occupancy Sensor	19
Switch	New	Install Wall Mounted Occupancy Sensor	7

Middle School			
Existing Fixture Family	Action	Proposed	Qty
Shoobox Parking Lot Pole Light 250 HPS	New	New LED Area Light	6

ABM – SCOPE OF WORK SUMMARY

Post Top Light, 250W Acorn Top	New	New LED Post Top Light	8
Gooseneck Area Light 175W HPS	Retrofit	Retrofit with LED Lamp	8
2' 2 Lamp T8 Fluorescent Troffer	Retrofit	Retrofit with 2-2' Type B TLED	5
2' 3 Lamp T8 Fluorescent Troffer	Retrofit	Retrofit with 3-2' Type B TLED	7
3' 2 Lamp T8 Fluorescent Strip	Retrofit	Retrofit with 2-3' Type B TLED	4
3' 2 Lamp T8 Fluorescent Strip	Retrofit	Retrofit with 2-3' Type B TLED	4
4' 1 Lamp T8 Fluorescent Strip	Retrofit	Retrofit with 1-4' Type B TLED	11
4' 2 Lamp T8 Fluorescent Wrap	Retrofit	Retrofit with 2-4' Type B TLED	63
8' 4 Lamp T8 Fluorescent Wrap	Retrofit	Retrofit with 4-8' Type B TLED	6
6" Downlight with 2-16W CFL Lamps	Retrofit	6" LED Retrofit Downlight Kit	19
Switch	New	Install Ceiling Mounted Occupancy Sensor	41
Switch	New	Install Wall Mounted Occupancy Sensor	34

Forest Grove Elementary			
Existing Fixture Family	Action	Proposed	Qty
Shoebox Parking Lot Pole Light 250 HPS	New	New LED Area Light	4
Post Top Light, 250W	New	New LED Post Top Light	1

ABM – SCOPE OF WORK SUMMARY

4' 2 Lamp T8 Fluorescent	Retrofit	Retrofit with 2-4' Type B TLED	4
4' 4 Lamp T8 Fluorescent Troffer	Retrofit	Retrofit with 4-4' Type B TLED	27
Switch	New	Install Ceiling Mounted Occupancy Sensor	2
Switch	New	Install Wall Mounted Occupancy Sensor	1

Robert Down Elementary

Existing Fixture Family	Action	Proposed	Qty
4' 2 Lamp T8 Fluorescent Wrap	New	New 4' LED Wrap Fixture	2
Wall Pack, 175W HID	New	New LED Wall Pack	1
4' 2 T8 Fluorescent Wrap	Retrofit	Retrofit with 2-4' Type B TLED	13
Switch	New	Install Ceiling Mounted Occupancy Sensor	24
Switch	New	Install Wall Mounted Occupancy Sensor	6

District Office/Maintenance

Existing Fixture Family	Action	Proposed	Qty
Shoobox Parking Lot Pole Light 250 HPS	New	New LED Area Light	1
3' 2 Lamp T8 Fluorescent Strip	Retrofit	Retrofit with 2-3' Type B TLED	1
4' 1 Lamp T8 Fluorescent Strip	Retrofit	Retrofit with 1-4' Type B TLED	1
4' 2 Lamp T8 Fluorescent Strip	Retrofit	Retrofit with 2-4' Type B TLED	13
Switch	New	Install Ceiling Mounted Occupancy Sensor	2
Switch	New	Install Wall Mounted Occupancy Sensor	7

Technical Category #6.1

Building Envelope Modifications

ABM completed a comprehensive building envelope survey during the development of this project which included using infrared thermography to detect areas where there is unwanted infiltration and exfiltration of air. While the initial investigation was to identify energy loss in the facilities, we did encounter some areas where work should be performed to prevent damage from weather, pests etc. Through our study we identified 16,776 Linear Ft of gaps that need sealing, 362 Door frames that need resealing, 361 Door Sweeps that need replacing and 43 Astragals that should be installed. ABM recommends filling in gaps and cracks around windows, doors, and pipe penetrations to better seal each facility. Below are a few sample example areas that will be improved.

		
<p>“D1” Recommend weather strip, astragal and door sweeps</p>		<p>“A” Recommend sealant at penetrations</p>
		
<p>“D15” Recommend weather strip, astragal</p>		<p>“I” Recommend sealant at penetrations</p>

Technical Category #12.1

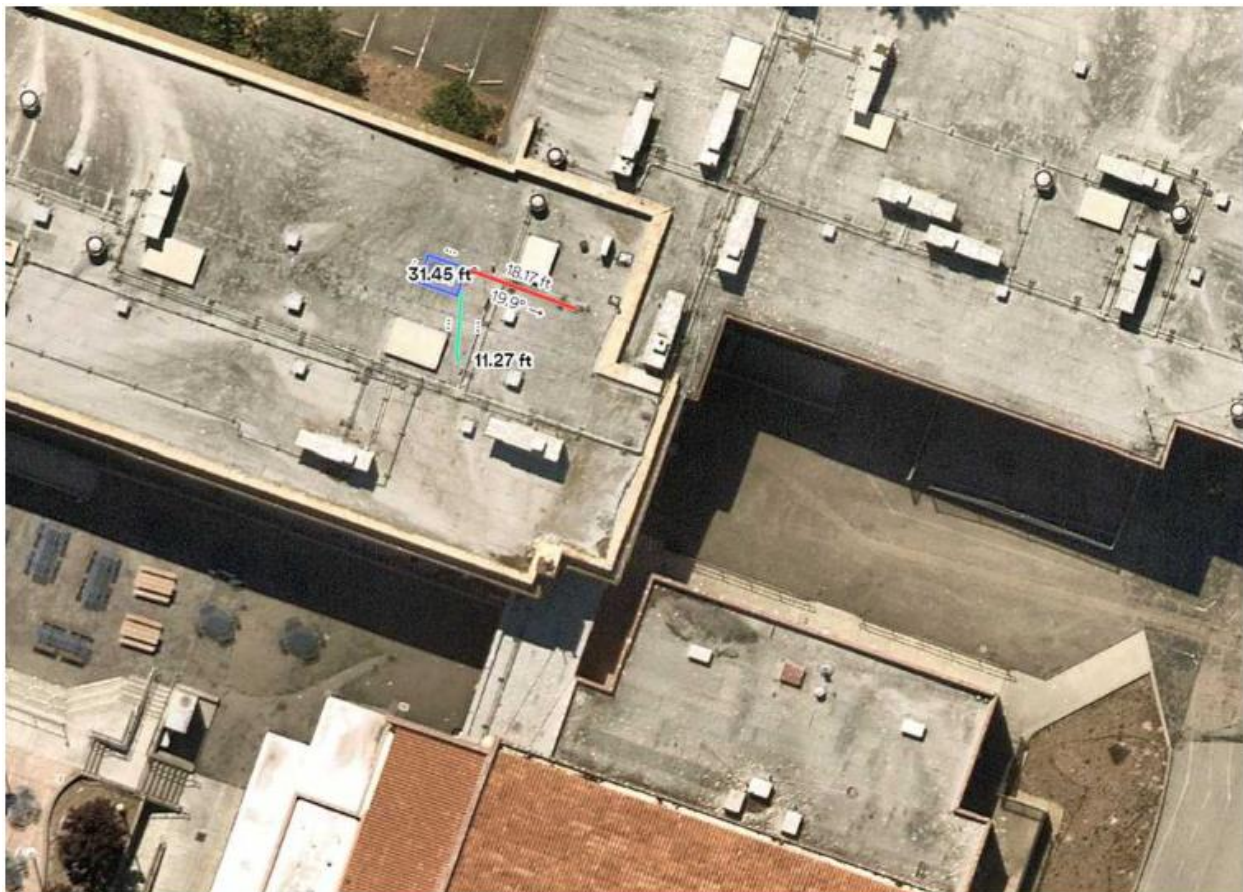
Electrical Upgrades (PGHS Main Service Panel)

The main electrical service panel/switchgear at the High School is at risk for failure in its current location. The electrical service panel is currently in an electrical room against a wall that is currently a pathway for water to regularly flow behind and below the panel. ABM recommends replacing and relocating the panel/switchgear due to safety concerns and installing the switchgear within a NEMA 3R rated stainless steel enclosure.

Technical Category #12.2

Generator / Resiliency

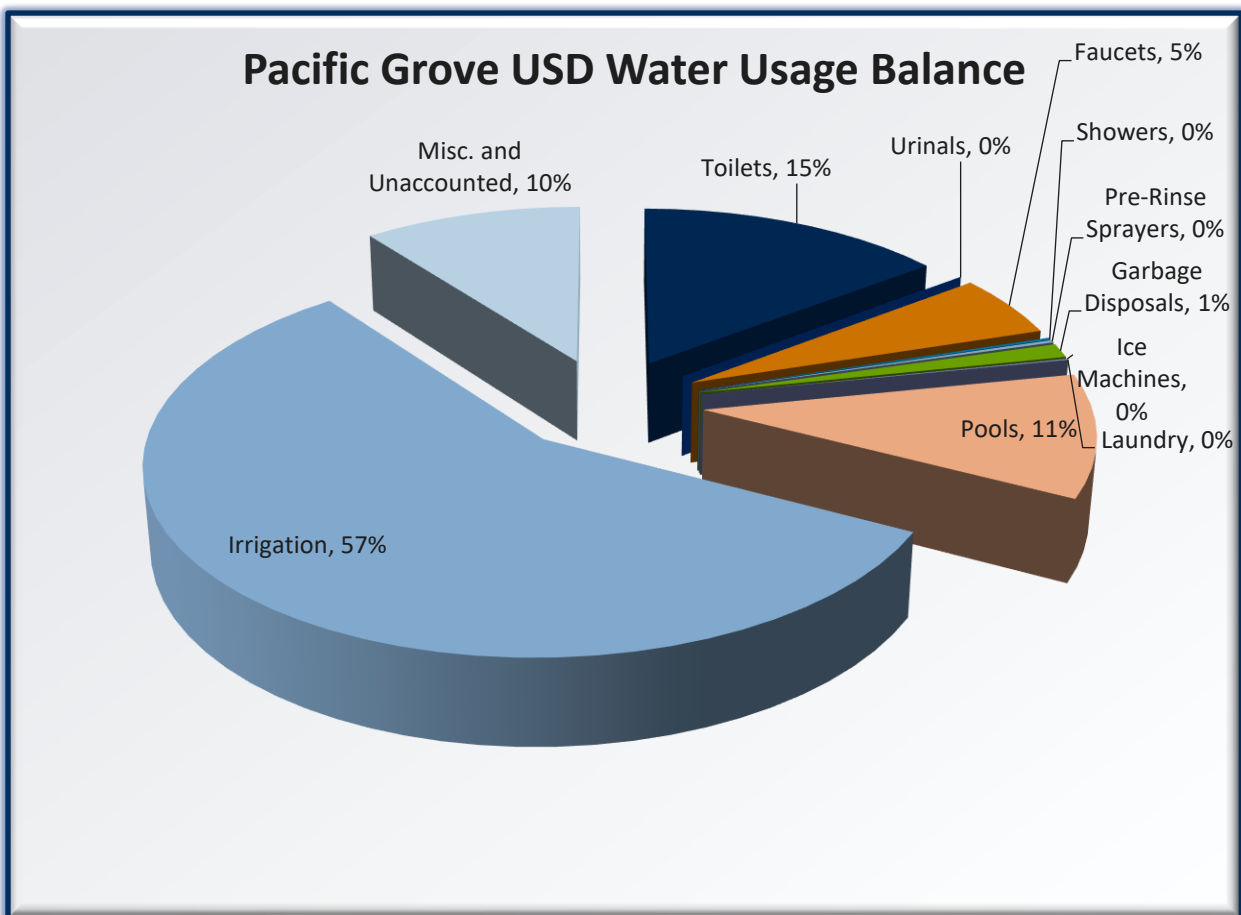
Pacific Grove Middle School does not have any backup power in the form of on-site generation. The district regularly experiences both short term and long-term power outages. Since the District’s main IT hub is located at the Middle School, ABM recommends installing backup generation to provide power to the IT hub during power outages. ABM recommends installing a natural gas generator for this solution. New unit is to be located on a roof as shown below. The generator will be able to run as long as necessary to increase the District’s resiliency against grid impacts.



Technical Category #13.1

Water Conservation

ABM performed a comprehensive water usage analysis which included analyzing the use of both domestic and irrigation water. Based on the water analysis and survey, ABM recommends more efficient domestic plumbing equipment for water savings. This includes aerators on sinks, new toilets in select areas, flush valves, shower heads, and kitchen pre-rinse sprayers. ABM does not recommend pursuing irrigation savings opportunities at this time given the District’s long-term plan to reduce irrigation by installing xeriscaping throughout the district. Listed below is the water balance analysis as well as the scope of work per school.



High School and Forest Grove ES:

Description	Fixture Code	Specification	Quantity
Install 1.1 /1.6 gpf HET Wall Hung Toilet	WHTC	Kohler K-84325	21
Install 1.1 /1.6 gpf HET Floor Mount Floor Discharge Toilet	FMFDTC	Kohler K-96053	9
Install 1.1 /1.6 gpf HET Floor Mount Floor Discharge ADA Toilet	FMFATC	Kohler K-96057	7
Install 1.1 /1.6 gpf HET Juvenile Toilet	JUNTC	Kohler K-96059	17
Install 0.8/1.0 gpf HET Dual Flush Floor Mount Floor Discharge Elongated Tank Toilet	DFTT	Caroma Sydney Smart III 305-102	2
Elongated Open Front Seat	EO	Bemis 1955SSCT	56
Install 1.28 gpf HET Manual Toilet Valve w/ 9" vBt	MTV9-1.28	Sloan GEM-2 111-1.28	39
Install 1.28 gpf HET Manual Toilet Valve w/ 13" vBt	MTV13-1.28	Sloan GEM-2 113-1.28	24
Install 1.28 gpf HET Sensor Toilet Valve w/ 9" vBt	STV9-1.28	Sloan GEM-2 111 SFSM-1.28	3
Add extended J-tube with valve installation	XJT	Zurn ZP6000J10	1
Raise toilet vBt length to 9" to meet code requirements in exposed application	Ex-TO vBt Compliance	1" Chrome 90 & Nipple-3L	21
Raise toilet vBt length to 9" to meet code requirements	Ex-TO vBt Compliance / Offset	1" Chrome 90 & Nipple-3L / Sloan Offset Tube	2

ABM – SCOPE OF WORK SUMMARY

Install 0.5 gpm Tamperproof PCA Spray Flow Control for Existing Faucet w/ Thread Adapter	SFC-0.5	Neoperl 40.7059.733	54
Install 1.0 gpm Tamperproof PCA Laminar Flow Control for Existing Faucet w/ Thread Adapter	LFC-1.0	Neoperl 40.2158.733	35
Install 1.5 gpm Tamperproof PCA Laminar Flow Control for Existing Faucet w/ Thread Adapter	LFC-1.5	Neoperl 40.2156.733	3
Install 1.0 gpm Stainless Steel Tamperproof PCA Spray Flow Control for Existing Faucet w/ Thread Adapter	SFC-0.5-SS	Neoperl 45-014	7
Install New 4" Centerset Brass Valve Single Control Lavatory Faucet with 0.5 gpm Tamperproof Flow Control	F4SC-0.5-Lav	Chicago 2200-4E2805ABCP	1
Install New Single Hole Brass Valve Single Temp Push Button Metering Lavatory Faucet with 0.5 gpm Tamperproof Flow Control	MF1ST-0.5-Lav	Chicago 3500-E2805ABCP	1
Install 1.5 gpm Nozzle Type Showerheads	NOZSH-1.5	High Sierra (various models)	12
Install 0.6 gpm straight pre-rinse sprayer	PRS-Straight	Bricor Pre-Rinse 0.6	1

Community High School:

Description	Fixture Code	Specification	Quantity
Install 1.1 /1.6 gpf HET Floor Mount Floor Discharge ADA Toilet	FMFATC	Kohler K-96057	3
Install 0.8/1.0 gpf HET Dual Flush Floor Mount Floor Discharge Elongated Tank Toilet	DFTT	Caroma Sydney Smart III 305-102	1
Install 1.28 gpf HET Infant Gravity Tank Toilet	INFGTT	American Standard 2315.228.020	1
Elongated Open Front Seat	EO	Bemis 1955SSCT	4
Baby Open Front Seat	BO	Bemis BB955C	1
Install 1.28 gpf HET Manual Toilet Valve w/ 13" vBt	MTV13-1.28	Sloan GEM-2 113-1.28	8
Raise toilet vBt length to 9" to meet code requirements in exposed application	Ex-TO vBt Compliance	1" Chrome 90 & Nipple-3L	8
Raise urinal vBt length to 9" to meet code requirements in exposed application	Ex-UR vBt Compliance	3/4" Chrome 90 & Nipple-3L	2
Install 0.125 gpf HEU Small Pint Urinal (16" to 20" Footprint)	SPFUC	Kohler K-5452-ET	2
Install 0.125 gpf HEU Manual Urinal Valve w/ C13 vBt	MUV-C13-0.125	Sloan GEM-2 186-0.125 w/C15 vbt	2
Install 0.5 gpm Tamperproof PCA Spray Flow Control for Existing Faucet w/ Thread Adapter	SFC-0.5	Neoperl 40.7059.733	7

ABM – SCOPE OF WORK SUMMARY

Install 1.0 gpm Tamperproof PCA Laminar Flow Control for Existing Faucet w/ Thread Adapter	LFC-1.0	Neoperl 40.2158.733	4
Install 1.5 gpm Tamperproof PCA Laminar Flow Control for Existing Faucet w/ Thread Adapter	LFC-1.5	Neoperl 40.2156.733	2
Install 0.5 gpm Tamperproof PCA Cache Spray Flow Control for Existing Faucet	CSFC-0.5	Neoperl 40.7359.010	1
Install New Single Hole Single Temp Gooseneck General Purpose Faucet with 1.5 gpm Tamperproof Flow Restrictor	F1STGN-1.0	Chicago 350-E35VP317XKABCP	2

Adult School:

Description	Fixture Code	Specification	Quantity
Install 1.1 /1.6 gpf HET Floor Mount Floor Discharge Toilet	FMFDTC	Kohler K-96053	5
Install 1.1 /1.6 gpf HET Floor Mount Floor Discharge ADA Toilet	FMFATC	Kohler K-96057	6
Elongated Open Front Seat	EO	Bemis 1955SSCT	11
Install 1.28 gpf HET Manual Toilet Valve w/ 9" vBt	MTV9-1.28	Sloan GEM-2 111-1.28	6

ABM – SCOPE OF WORK SUMMARY

Install 1.28 gpf HET Manual Toilet Valve w/ 13" vBt	MTV13-1.28	Sloan GEM-2 113-1.28	5
Raise toilet vBt length to 9" to meet code requirements in exposed application	Ex-TO vBt Compliance	1" Chrome 90 & Nipple-3L	5
Install 1.0 gpm Tamperproof PCA Laminar Flow Control for Existing Faucet w/ Thread Adapter	LFC-1.0	Neoperl 40.2158.733	5
Install 1.5 gpm Tamperproof PCA Laminar Flow Control for Existing Faucet w/ Thread Adapter	LFC-1.5	Neoperl 40.2156.733	1
Install New 4" Centerset Brass Valve Push Button Metering Lavatory Faucet with 0.5 gpm Tamperproof Flow Control	MF4-0.5-Lav	Chicago 802-VE2805-665ABCP	1

Middle School:

Description	Fixture Code	Specification	Quantity
Install 1.1 /1.6 gpf HET Floor Mount Floor Discharge Toilet	FMFDTC	Kohler K-96053	8
Install 1.1 /1.6 gpf HET Floor Mount Floor Discharge ADA Toilet	FMFATC	Kohler K-96057	11
Install 1.1 /1.6 gpf HET Juvenile Toilet	JUNTC	Kohler K-96059	4
Elongated Open Front Seat	EO	Bemis 1955SSCT	23

ABM – SCOPE OF WORK SUMMARY

Install 1.28 gpf HET Manual Toilet Valve w/ 9" vBt	MTV9-1.28	Sloan GEM-2 111-1.28	15
Install 1.28 gpf HET Manual Toilet Valve w/ 13" vBt	MTV13-1.28	Sloan GEM-2 113-1.28	8
Raise toilet vBt length to 9" to meet code requirements in exposed application	Ex-TO vBt Compliance	1" Chrome 90 & Nipple-3L	8
Install 0.5 gpm Tamperproof PCA Spray Flow Control for Existing Faucet w/ Thread Adapter	SFC-0.5	Neoperl 40.7059.733	12
Install 1.0 gpm Tamperproof PCA Laminar Flow Control for Existing Faucet w/ Thread Adapter	LFC-1.0	Neoperl 40.2158.733	10
Install 1.5 gpm Tamperproof PCA Laminar Flow Control for Existing Faucet w/ Thread Adapter	LFC-1.5	Neoperl 40.2156.733	4
Install 1.0 gpm Stainless Steel Tamperproof PCA Spray Flow Control for Existing Faucet w/ Thread Adapter	SFC-0.5-SS	Neoperl 45-014	1
Install 0.6 gpm straight pre-rinse sprayer	PRS-Straight	Bricor Pre-Rinse 0.6	1

Robert Down ES:

Description	Fixture Code	Specification	Quantity
Install 1.1 /1.6 gpf HET Wall Hung Toilet	WHTC	Kohler K-84325	11
Install 1.1 /1.6 gpf HET Floor Mount Floor Discharge ADA Toilet	FMFATC	Kohler K-96057	5
Install 1.1 /1.6 gpf HET Juvenile Toilet	JUNTC	Kohler K-96059	15
Install 0.8/1.0 gpf HET Dual Flush Floor Mount Floor Discharge Elongated Tank Toilet	DFTT	Caroma Sydney Smart III 305-102	1
Install 1.28 gpf HET Infant Gravity Tank Toilet	INFGTT	American Standard 2315.228.020	1
Elongated Open Front Seat	EO	Bemis 1955SSCT	32
Baby Open Front Seat	BO	Bemis BB955C	1
Install 1.28 gpf HET Manual Toilet Valve w/ 9" vBt	MTV9-1.28	Sloan GEM-2 111-1.28	20
Install 1.28 gpf HET Manual Toilet Valve w/ 13" vBt	MTV13-1.28	Sloan GEM-2 113-1.28	11
Raise toilet vBt length to 9" to meet code requirements in exposed application	Ex-TO vBt Compliance	1" Chrome 90 & Nipple-3L	9
Raise toilet vBt length to 9" to meet code requirements in exposed application and Add Offset Tube	Ex-TO vBt Compliance / Offset	1" Chrome 90 & Nipple-3L / Sloan Offset Tube	2

ABM – SCOPE OF WORK SUMMARY

Install 0.5 gpm Tamperproof PCA Spray Flow Control for Existing Faucet w/ Thread Adapter	SFC-0.5	Neoperl 40.7059.733	4
Install 1.0 gpm Tamperproof PCA Laminar Flow Control for Existing Faucet w/ Thread Adapter	LFC-1.0	Neoperl 40.2158.733	21
Install 0.5 gpm Tamperproof PCA Cache Spray Flow Control for Existing Faucet	CSFC-0.5	Neoperl 40.7359.010	1
Install 1.0 gpm Stainless Steel Tamperproof PCA Spray Flow Control for Existing Faucet w/ Thread Adapter	SFC-0.5-SS	Neoperl 45-014	1
Install New 4" Centerset Brass Valve Single Control Lavatory Faucet with 0.5 gpm Tamperproof Flow Control	F4SC-0.5-Lav	Chicago 2200-4E2805ABCP	4
Install New Single Hole Single Temp Gooseneck General Purpose Faucet with 1.5 gpm Tamperproof Flow Restrictor	F1STGN-1.0	Chicago 350-E35VP317XKABCP	5
Install New Lavatory Basin with 4" Centerset Holes and Back Splash	B4BS-Lav	Sloan SS-3003	1

District Office:

Description	Fixture Code	Specification	Quantity
Install 1.1 /1.6 gpf HET Floor Mount Floor Discharge Toilet	FMFDTC	Kohler K-96053	3
Install 1.1 /1.6 gpf HET Floor Mount Floor Discharge ADA Toilet	FMFATC	Kohler K-96057	3
Elongated Open Front Seat	EO	Bemis 1955SSCT	6
Install 1.28 gpf HET Manual Toilet Valve w/ 9" vBt	MTV9-1.28	Sloan GEM-2 111-1.28	6
Install 1.0 gpm Tamperproof PCA Laminar Flow Control for Existing Faucet w/ Thread Adapter	LFC-1.0	Neoperl 40.2158.733	3

Technical Category #19.1

Appliance Upgrades

The Middle School home economics room currently has several gas fired stove/oven appliances. ABM recommends replacing the gas fired oven/stove appliances with electric appliances. This will eliminate carbon monoxide concerns in the classroom. ABM will install the proper electrical upgrades necessary to support the new appliances.