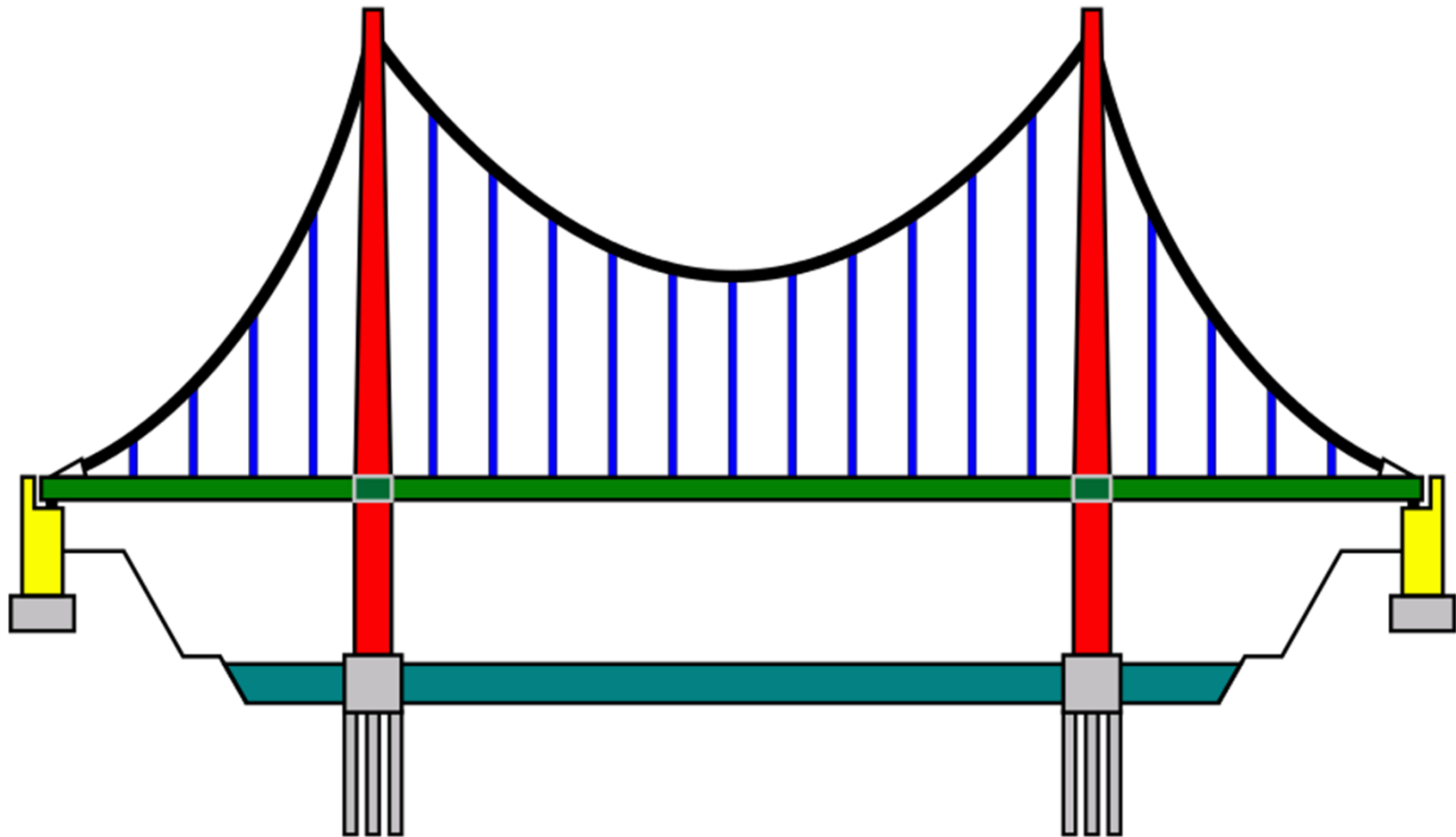


# PGUSD Suspension Report

July 2014 - May 2015

July 2015-December 2015



## EDUCATION CODE SECTION 48900

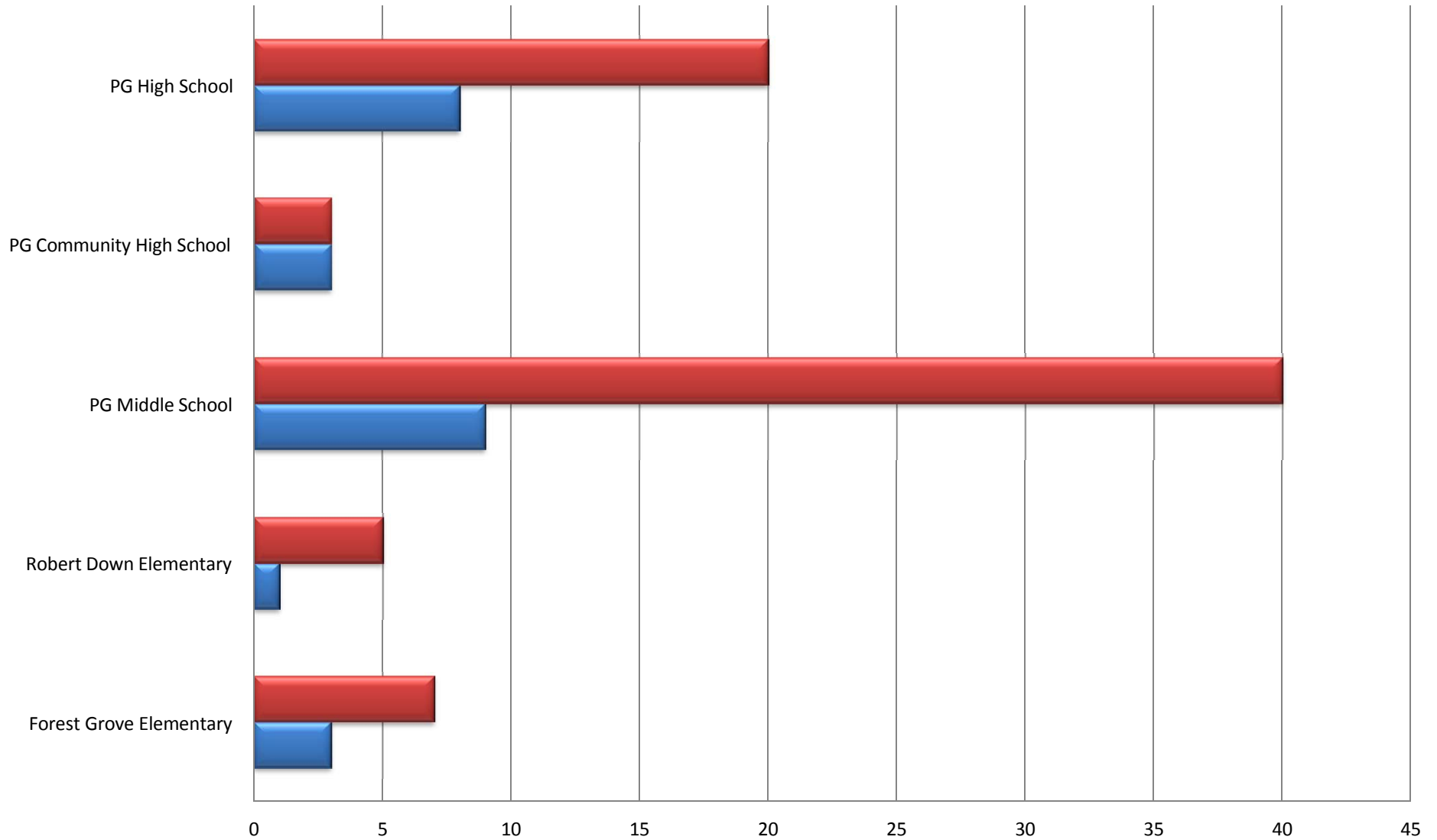
1. Caused, attempted to cause, or threatened to cause physical injury.
2. Willfully used force or violence on another person, except in self-defense.
- b. Possessed, sold or otherwise furnished any firearm, knife, explosive, or other dangerous object.
- c. Possessed, used, sold, furnished, or been under the influence of any controlled substance, alcohol, or intoxicant
- d. Offered, arranged, or negotiated to sell a controlled substance, alcohol or intoxicant and then provided a replica substance.
- e. Attempted or committed robbery or extortion.
- f. Attempted or caused damage to school or private property.
- g. Attempted or stole school or private property.
- h. Possessed, or used a tobacco product.
- i. Committed an obscene act or engaged in habitual profanity or vulgarity.
- j. Possessed, offered, arranged, or negotiated to sell drug paraphernalia.
- k. Disrupted school activities or defied school personnel.
- l. Knowingly received stolen school or private property.
- m. Possessed an imitation firearm.
- n. Attempted or committed sexual assault or committed a sexual battery.
- o. Harassed, threatened, or intimidated a student complainant or witness in a school disciplinary matter.
- p. Unlawfully offered, arranged to sell, negotiated to sell, or sold the prescription drug Soma.
- q. Engaged in, or attempted to engage in, hazing.
- r. Engaged in an act of bullying.
- t. Aided or abetted in the attempted or infliction of physical injury to another.

Expel only when connected to (a)

2. Committed sexual harassment. (Grades 4-12)
3. Attempted, threatened, caused, or participated in hate violence. (Grades 4-12)
4. Harassment, threats or intimidation creating an intimidating or hostile educational environment. (Grades 4-12)
- .7 Made terroristic threats against school officials or property.

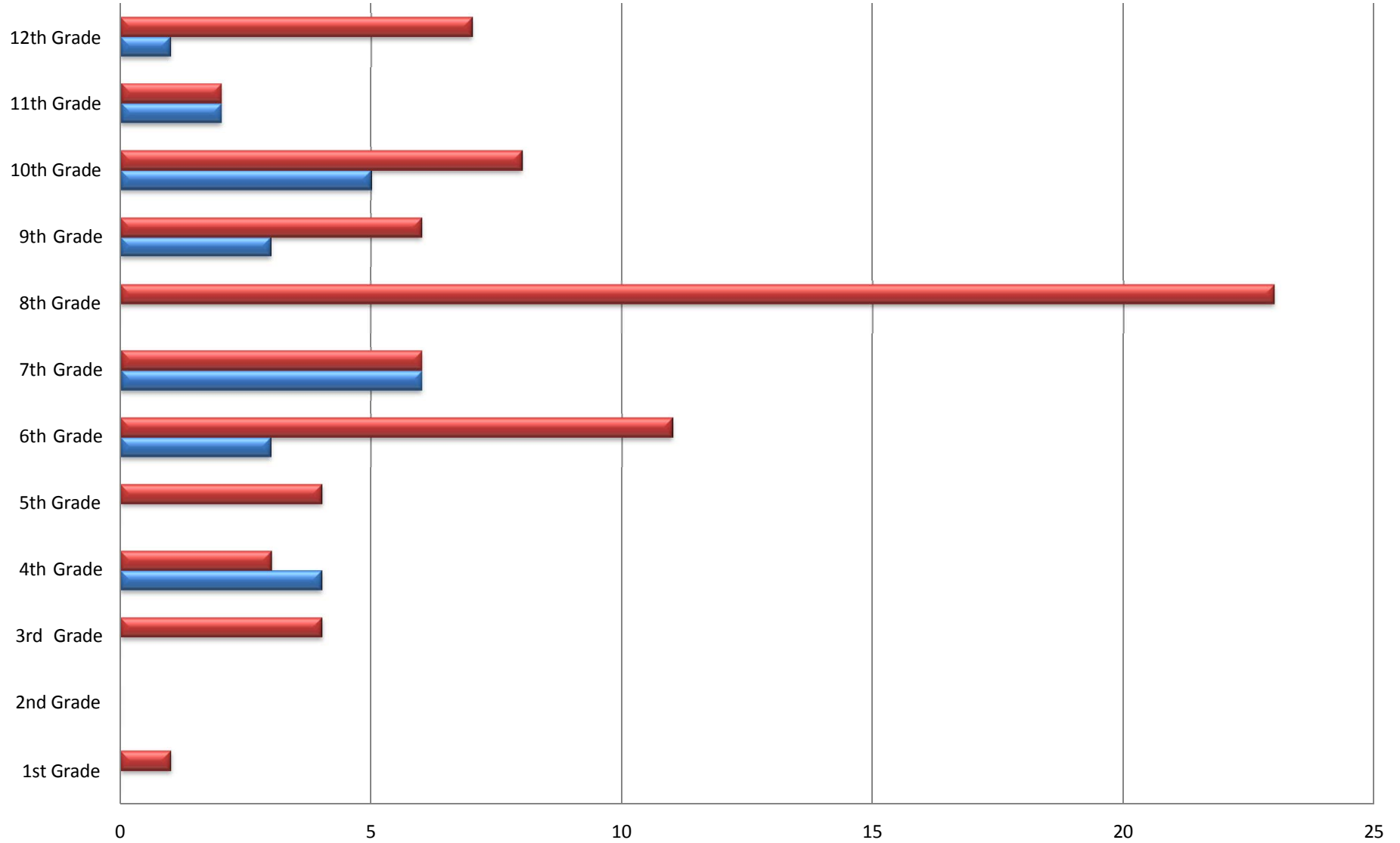
|                  | 2014-15     |               | 2015-16     |               |
|------------------|-------------|---------------|-------------|---------------|
| <b>RHD</b>       | <b>Code</b> | <b>Susp's</b> | <b>Code</b> | <b>Susp's</b> |
|                  | a1          | 1             | a2          | 1             |
| <b>FG</b>        | a2          | 4             |             |               |
|                  | <b>Code</b> | <b>Susp's</b> | <b>Code</b> | <b>Susp's</b> |
|                  | a1          | 4             | a2          | 1             |
|                  |             |               | r           | 3             |
| <b>PG Middle</b> |             |               | 4           | 3             |
|                  | <b>Code</b> | <b>Susp's</b> | <b>Code</b> | <b>Susp's</b> |
|                  | a1          | 16            | a1          | 4             |
|                  | b           | 3             | a2          | 1             |
|                  | f           | 2             | f           | 1             |
|                  | g           | 3             | g           | 1             |
|                  | i           | 9             | i           | 1             |
|                  | r           | 3             | m           | 1             |
|                  | 2           | 4             | 2           | 1             |
|                  | 4           | 2             |             |               |
| <b>PGHS</b>      | 7           | 1             |             |               |
|                  | <b>Code</b> | <b>Susp's</b> | <b>Code</b> | <b>Susp's</b> |
|                  | a1          | 1             | a2          | 2             |
|                  | a2          | 3             | c           | 5             |
|                  | b           | 1             | j           | 1             |
|                  | c           | 9             |             |               |
|                  | g           | 3             |             |               |
|                  | h           | 1             |             |               |
|                  | i           | 2             |             |               |
|                  | j           | 3             |             |               |
| <b>PG Comm</b>   | r           | 2             |             |               |
|                  | <b>Code</b> | <b>Susp's</b> | <b>Code</b> | <b>Susp's</b> |
|                  | c           | 1             | a1          | 2             |
|                  | h           | 1             | i           | 1             |
|                  | j           | 2             |             |               |

## PGUSD School's Aug 2014-Dec 2015 Suspension Report



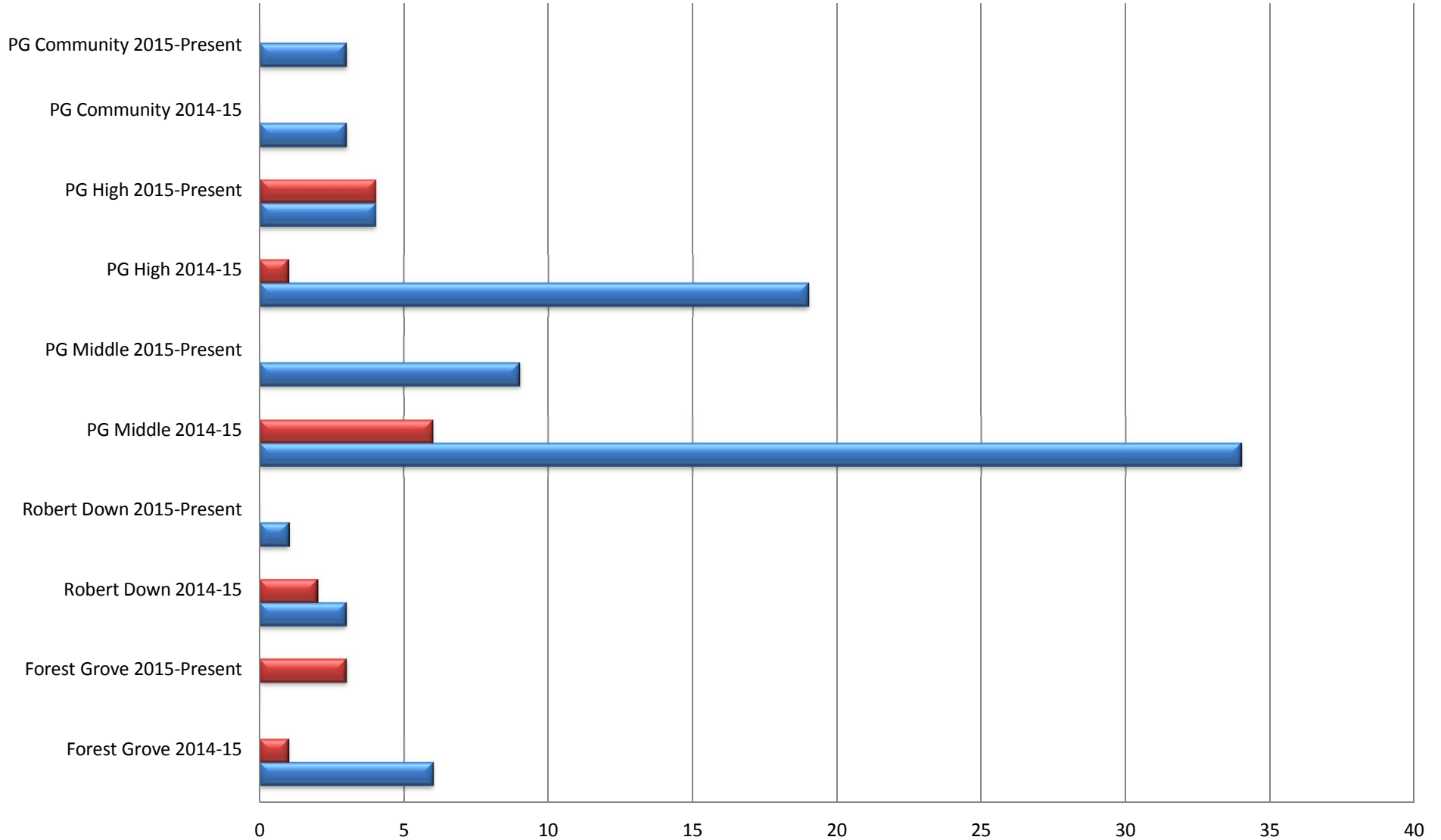
|                         | Forest Grove Elementary | Robert Down Elementary | PG Middle School | PG Community High School | PG High School |
|-------------------------|-------------------------|------------------------|------------------|--------------------------|----------------|
| PGUSD School's 2014-15  | 7                       | 5                      | 40               | 3                        | 20             |
| PGUSD School's 2015-EOY | 3                       | 1                      | 9                | 3                        | 8              |

## Suspensions by Grade Aug 2014-Dec 2015



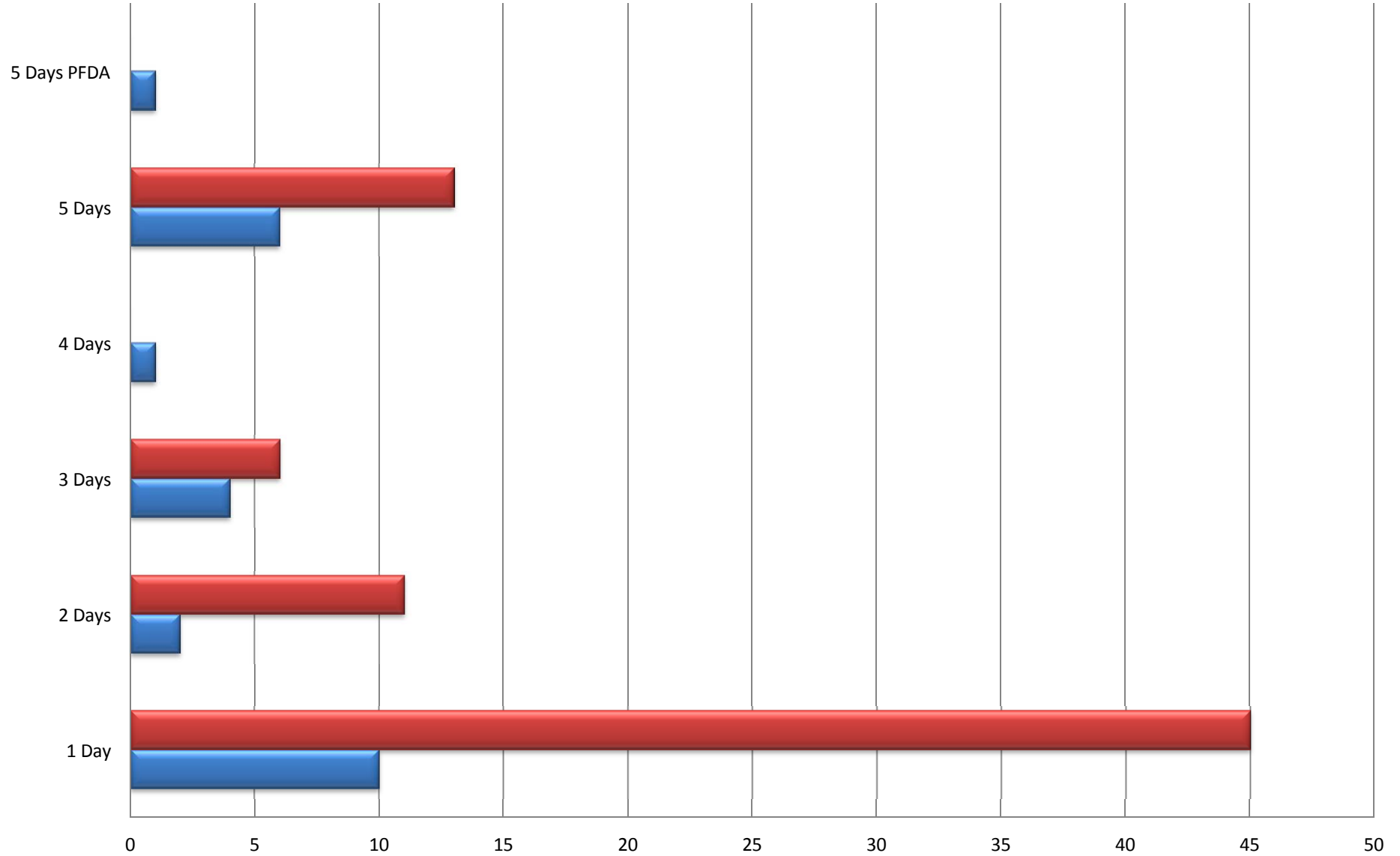
|                | 1st Grade | 2nd Grade | 3rd Grade | 4th Grade | 5th Grade | 6th Grade | 7th Grade | 8th Grade | 9th Grade | 10th Grade | 11th Grade | 12th Grade |
|----------------|-----------|-----------|-----------|-----------|-----------|-----------|-----------|-----------|-----------|------------|------------|------------|
| ■ 2014-15      | 1         | 0         | 4         | 3         | 4         | 11        | 6         | 23        | 6         | 8          | 2          | 7          |
| ■ 2015-Present | 0         | 0         | 0         | 4         | 0         | 3         | 6         | 0         | 3         | 5          | 2          | 1          |

## Suspensions by Gender Aug 2014-Dec 2015



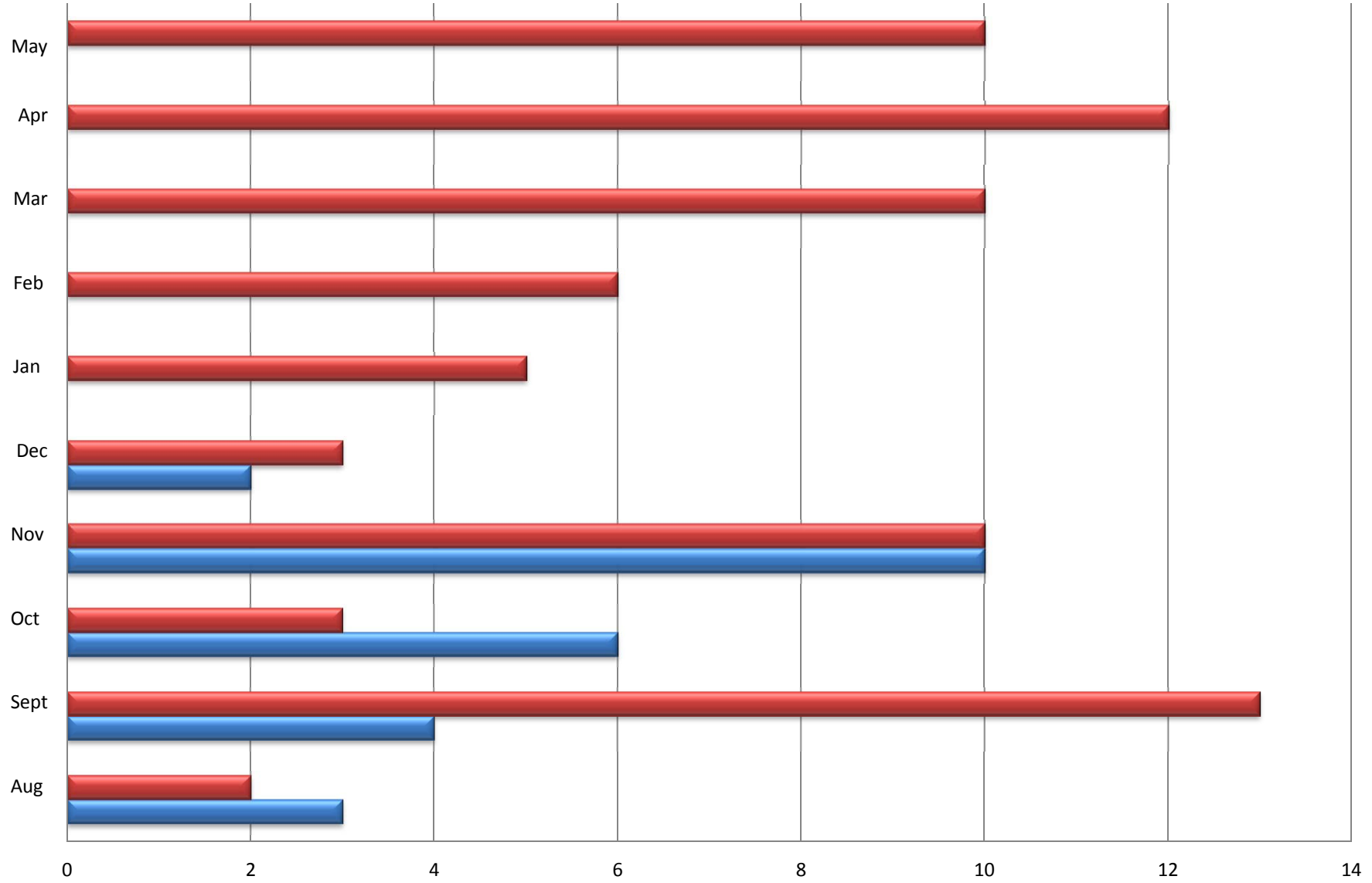
|        | Forest Grove 2014-15 | Forest Grove 2015-Present | Robert Down 2014-15 | Robert Down 2015-Present | PG Middle 2014-15 | PG Middle 2015-Present | PG High 2014-15 | PG High 2015-Present | PG Community 2014-15 | PG Community 2015-Present |
|--------|----------------------|---------------------------|---------------------|--------------------------|-------------------|------------------------|-----------------|----------------------|----------------------|---------------------------|
| Female | 1                    | 3                         | 2                   | 0                        | 6                 | 0                      | 1               | 4                    | 0                    | 0                         |
| Male   | 6                    | 0                         | 3                   | 1                        | 34                | 9                      | 19              | 4                    | 3                    | 3                         |

## Suspensions by Amount of Day(s) Suspended Aug 2014-Dec 2015



|              | 1 Day | 2 Days | 3 Days | 4 Days | 5 Days | 5 Days PFDA |
|--------------|-------|--------|--------|--------|--------|-------------|
| 2014-15      | 45    | 11     | 6      | 0      | 13     | 0           |
| 2015-Present | 10    | 2      | 4      | 1      | 6      | 1           |

## Suspensions by Month Aug 2014-Dec 2015



|                | Aug | Sept | Oct | Nov | Dec | Jan | Feb | Mar | Apr | May |
|----------------|-----|------|-----|-----|-----|-----|-----|-----|-----|-----|
| ■ 2014-15      | 2   | 13   | 3   | 10  | 3   | 5   | 6   | 10  | 12  | 10  |
| ■ 2015-Present | 3   | 4    | 6   | 10  | 2   | 0   | 0   | 0   | 0   | 0   |